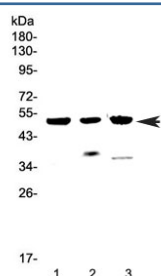


HTRA1 Antibody (RQ4205)

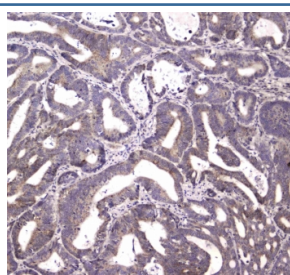
Catalog No.	Formulation	Size
RQ4205	0.5mg/ml if reconstituted with 0.2ml sterile DI water	100 ug

Bulk quote request

Availability	1-3 business days
Species Reactivity	Human, Mouse, Rat
Format	Antigen affinity purified
Clonality	Polyclonal (rabbit origin)
Isotype	Rabbit IgG
Purity	Antigen affinity purified
Buffer	Lyophilized from 1X PBS with 2% Trehalose and 0.025% sodium azide
UniProt	Q92743
Localization	Cytoplasmic, cell membrane
Applications	Western Blot : 0.5-1ug/ml Immunohistochemistry (FFPE) : 1-2ug/ml
Limitations	This HTRA1 antibody is available for research use only.



Western blot testing of 1) human MCF7, 2) rat heart and 3) mouse heart lysate with HTRA1 antibody at 0.5ug/ml. Predicted molecular weight ~51 kDa.



IHC testing of FFPE human rectal cancer tissue with HTRA1 antibody at 1ug/ml. Required HIER: steam section in pH6 citrate buffer for 20 min and allow to cool prior to staining.

Description

Serine protease HTRA1 is an enzyme that in humans is encoded by the HTRA1 gene. This gene encodes a member of the trypsin family of serine proteases. This protein is a secreted enzyme that is proposed to regulate the availability of insulin-like growth factors (IGFs) by cleaving IGF-binding proteins. It has also been suggested to be a regulator of cell growth. Variations in the promoter region of this gene are the cause of susceptibility to age-related macular degeneration type 7.

Application Notes

Optimal dilution of the HTRA1 antibody should be determined by the researcher.

Immunogen

Amino acids QLRAASRRSERLHRPPVIVLQRGACGQGQEDPNSLRHKYNFIAD were used as the immunogen for the HTRA1 antibody.

Storage

After reconstitution, the HTRA1 antibody can be stored for up to one month at 4°C. For long-term, aliquot and store at -20°C. Avoid repeated freezing and thawing.