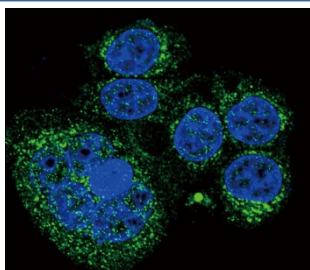


## HTRA1 Antibody (F54502)

Catalog No.	Formulation	Size
F54502-0.2ML	In 1X PBS, pH 7.4, with 0.09% sodium azide	0.2 ml
F54502-0.05ML	In 1X PBS, pH 7.4, with 0.09% sodium azide	0.05 ml

**Bulk quote request**

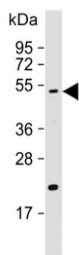
<b>Availability</b>	1-3 business days
<b>Species Reactivity</b>	Human, Mouse
<b>Format</b>	Purified
<b>Clonality</b>	Polyclonal (rabbit origin)
<b>Isotype</b>	Rabbit Ig
<b>Purity</b>	Purified
<b>UniProt</b>	Q92743
<b>Localization</b>	Cytoplasmic, cell membrane
<b>Applications</b>	Western Blot : 1:500-1:2000 Immunofluorescence : 1:25 Immunohistochemistry (FFPE) : 1:25
<b>Limitations</b>	This HTRA1 antibody is available for research use only.



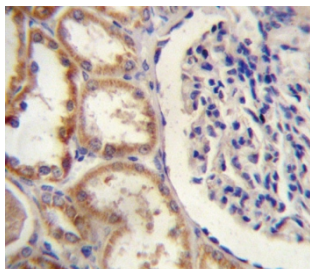
Immunofluorescent staining of human HeLa cells with HTRA1 antibody (green) and DAPI nuclear stain (blue).



Western blot testing of human HeLa cell lysate with HTRA1 antibody. Predicted molecular weight ~51 kDa.



Western blot testing of mouse brain lysate with HTRA1 antibody. Predicted molecular weight ~51 kDa.



IHC testing of FFPE human kidney tissue with HTRA1 antibody. HIER: steam section in pH6 citrate buffer for 20 min and allow to cool prior to staining.

## Description

HtrA1 is a member of the trypsin family of serine proteases. This protein is a secreted enzyme that is proposed to regulate the availability of insulin-like growth factors (IGFs) by cleaving IGF-binding proteins. It has also been suggested to be a regulator of cell growth.

## Application Notes

The stated application concentrations are suggested starting points. Titration of the HtrA1 antibody may be required due to differences in protocols and secondary/substrate sensitivity.

## Immunogen

A portion of amino acids 116-147 from the human protein was used as the immunogen for the HTRA1 antibody.

## Storage

Aliquot the HTRA1 antibody and store frozen at -20oC or colder. Avoid repeated freeze-thaw cycles.