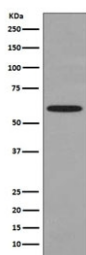


HSPD1 Antibody / Hsp60 [clone DOI-8] (RQ5336)

Catalog No.	Formulation	Size
RQ5336	Antibody in PBS with 0.02% sodium azide, 50% glycerol and 0.4-0.5mg/ml BSA	100 ul

[Bulk quote request](#)

Availability	1-2 weeks
Species Reactivity	Human
Format	Purified
Clonality	Rabbit Monoclonal
Isotype	Rabbit IgG
Clone Name	DOI-8
Purity	Affinity purified
UniProt	P10809
Applications	Western Blot : 1:500-1:2000
Limitations	This HSPD1 antibody is available for research use only.



Western blot testing of human HeLa cell lysate with HSPD1 antibody. Predicted molecular weight ~60 kDa.

Description

The HSPD1 gene encodes a member of the chaperonin family. The encoded mitochondrial protein may function as a signaling molecule in the innate immune system. This protein is essential for the folding and assembly of newly imported proteins in the mitochondria. This gene is adjacent to a related family member and the region between the 2 genes functions as a bidirectional promoter. Several pseudogenes have been associated with this gene. Two transcript variants encoding the same protein have been identified for this gene. Mutations associated with this gene cause autosomal recessive spastic paraplegia 13. [RefSeq]

Application Notes

Optimal dilution of the HSPD1 antibody should be determined by the researcher.

Immunogen

A synthetic peptide specific to human Hsp60 / HSPD1 was used as the immunogen for the HSPD1 antibody.

Storage

Store the HSPD1 antibody at -20oC.