

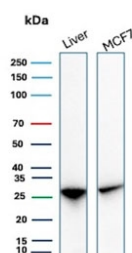
## HSPB1 Antibody / HSP70 [clone rHSPB1/7298] (V5206)

Catalog No.	Formulation	Size
V5206-100UG	0.2 mg/ml in 1X PBS with 0.1 mg/ml BSA (US sourced), 0.05% sodium azide	100 ug
V5206-20UG	0.2 mg/ml in 1X PBS with 0.1 mg/ml BSA (US sourced), 0.05% sodium azide	20 ug
V5206SAF-100UG	1 mg/ml in 1X PBS; BSA free, sodium azide free	100 ug

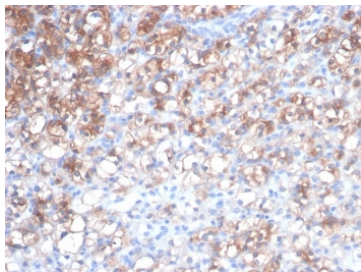
Recombinant **MOUSE MONOCLONAL**

[Bulk quote request](#)

<b>Availability</b>	1-3 business days
<b>Species Reactivity</b>	Human
<b>Format</b>	Purified
<b>Host</b>	Mouse
<b>Clonality</b>	Recombinant Mouse Monoclonal
<b>Isotype</b>	Mouse IgG1, kappa
<b>Clone Name</b>	rHSPB1/7298
<b>Purity</b>	Protein A/G affinity
<b>UniProt</b>	P04792
<b>Localization</b>	Cytoplasm, Nucleus
<b>Applications</b>	Immunohistochemistry (FFPE) : 1-2ug/ml for 30 min at RT Western Blot : 2-4ug/ml
<b>Limitations</b>	This HSPB1 antibody is available for research use only.



Western blot testing of human liver and MCF7 cell lysate with HSP27 / HSPB1 antibody (clone rHSPB1/7298). Predicted molecular weight: 23-27 kDa.



IHC staining of FFPE human renal cell carcinoma tissue with HSP27 / HSPB1 antibody (clone rHSPB1/7298). HIER: boil tissue sections in pH 9 10mM Tris with 1mM EDTA for 20 min and allow to cool before testing.

## Description

HSP27, also referred to as the Estrogen-Regulated 24K protein and HSP28, is one of several small heat shock proteins produced by all organisms studied. HSP27 synthesis is induced by elevated temperature, as well as by estrogen in hormone responsive cells. Interestingly, human HSP27 also shares greater than 50% homology with low molecular weight Drosophila HSPs and mammalian Alpha-crystalline lens protein. Because of the estrogen responsive nature of HSP27, this protein has been studied extensively in human estrogen responsive tissues such as cervix, endometrium and breast tissue. Therefore, HSP27 may be useful in classifying various hormone sensitive tumors.

## Application Notes

Optimal dilution of the HSPB1 antibody should be determined by the researcher.

## Immunogen

Recombinant human full-length protein was used as the immunogen for the HSPB1 antibody.

## Storage

Aliquot the HSPB1 antibody and store frozen at -20oC or colder. Avoid repeated freeze-thaw cycles.