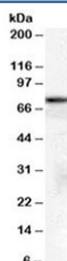


## HSPA8 Antibody / HSC70 (R33835)

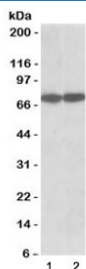
Catalog No.	Formulation	Size
R33835-100UG	0.5 mg/ml in 1X TBS, pH7.3, with 0.5% BSA (US sourced) and 0.02% sodium azide	100 ug

[Bulk quote request](#)

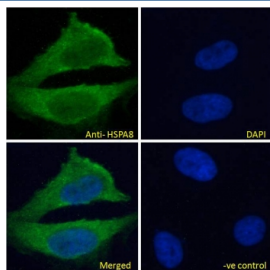
Availability	1-3 business days
Species Reactivity	Human, Mouse
Predicted Reactivity	Rat, Dog
Format	Antigen affinity purified
Host	Goat
Clonality	Polyclonal (goat origin)
Isotype	Goat Ig
Purity	Antigen affinity
Gene ID	3312
Applications	Western Blot : 1-3ug/ml IF/ICC : 10ug/ml ELISA (peptide) LOD : 1:4000
Limitations	This HSPA8 antibody is available for research use only.



Western blot testing of A431 cell lysate with HSPA8 antibody at 2ug/ml. Predicted molecular weight: ~71 kDa, routinely observed at 70-73 kDa.



Western blot testing of 1) human HepG2 and 2) mouse NIH3T3 cell lysate with HSPA8 antibody at 0.03ug/ml. Predicted molecular weight: ~71 kDa, routinely observed at 70-73 kDa.



IF/ICC testing of fixed and permeabilized human HeLa cells with HSPA8 antibody (green) at 10ug/ml and DAPI nuclear stain (blue).

## Description

Additional name(s) for this target protein: Heat shock 70kDa protein 8; Heat shock cognate 71 kDa protein

## Application Notes

Optimal dilution of the HSPA8 antibody should be determined by the researcher.

1. This HSPA8 antibody is specific for isoform 1 of the protein.

## Immunogen

Amino acids EKLQGKINDEDKQK were used as the immunogen for this HSPA8 antibody.

## Storage

Aliquot and store the HSPA8 antibody at -20oC.