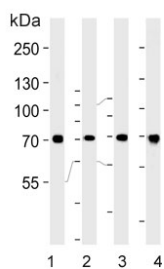


## HSPA8 Antibody / HSC70 (F54783)

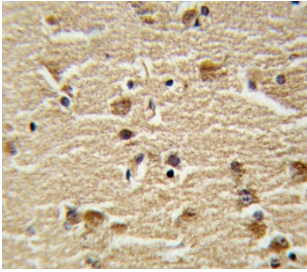
Catalog No.	Formulation	Size
F54783-0.4ML	In 1X PBS, pH 7.4, with 0.09% sodium azide	0.4 ml
F54783-0.08ML	In 1X PBS, pH 7.4, with 0.09% sodium azide	0.08 ml

[Bulk quote request](#)

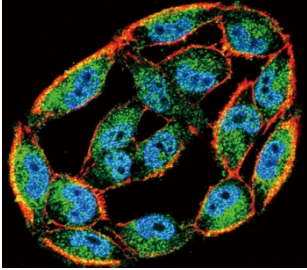
<b>Availability</b>	1-3 business days
<b>Species Reactivity</b>	Human, Mouse, Rat
<b>Format</b>	Purified
<b>Host</b>	Rabbit
<b>Clonality</b>	Polyclonal (rabbit origin)
<b>Isotype</b>	Rabbit Ig
<b>Purity</b>	Purified
<b>UniProt</b>	P11142
<b>Localization</b>	Cytoplasmic, nuclear
<b>Applications</b>	Western Blot : 1:500-1:1000 Flow Cytometry : 1:25 (1x10e6 cells) Immunofluorescence : 1:25 Immunohistochemistry (FFPE) : 1:25
<b>Limitations</b>	This HSPA8 antibody is available for research use only.



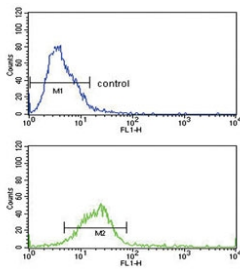
Western blot testing of 1) human A431, 2) human HeLa, 3) mouse NIH 3T3 and 4) rat H-4-II-E cell lysate with HSPA8 antibody. Expected molecular weight: 70-73 kDa.



IHC testing of FFPE human brain tissue with HSPA8 antibody. HIER: steam section in pH6 citrate buffer for 20 min and allow to cool prior to staining.



Immunofluorescent staining of human A2058 cells with HSPA8 antibody (green), DAPI nuclear stain (blue) and anti-Actin (red).



Flow cytometry testing of human HeLa cells with HSPA8 antibody; Blue=isotype control, Green= HSPA8 antibody.

## Description

HSPA8 belongs to the heat shock protein 70 family which contains both heat-inducible and constitutively expressed members. The latter are called heat-shock cognate proteins. HSPA8 is a heat-shock cognate protein. This protein binds to nascent polypeptides to facilitate correct folding. The protein also functions as an ATPase in the disassembly of clathrin-coated vesicles during transport of membrane components through the cell.

## Application Notes

The stated application concentrations are suggested starting points. Titration of the HSPA8 antibody may be required due to differences in protocols and secondary/substrate sensitivity.

## Immunogen

A portion of amino acids 82-110 from the human protein was used as the immunogen for the HSPA8 antibody.

## Storage

Aliquot the HSPA8 antibody and store frozen at -20oC or colder. Avoid repeated freeze-thaw cycles.

