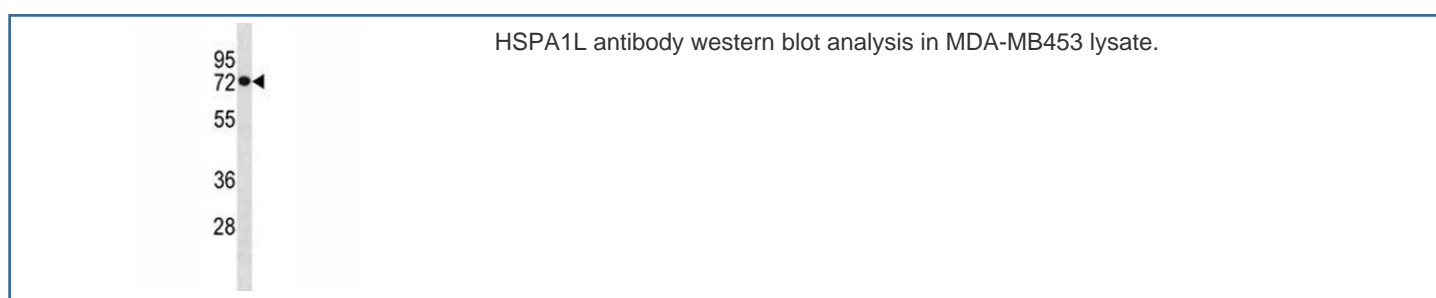


## HSPA1L Antibody (F40056)

Catalog No.	Formulation	Size
F40056-0.4ML	In 1X PBS, pH 7.4, with 0.09% sodium azide	0.4 ml
F40056-0.08ML	In 1X PBS, pH 7.4, with 0.09% sodium azide	0.08 ml

[Bulk quote request](#)

<b>Availability</b>	1-3 business days
<b>Species Reactivity</b>	Human
<b>Format</b>	Antigen affinity purified
<b>Clonality</b>	Polyclonal (rabbit origin)
<b>Isotype</b>	Rabbit Ig
<b>Purity</b>	Antigen affinity
<b>UniProt</b>	Q53FA3
<b>Applications</b>	Western Blot : 1:1000
<b>Limitations</b>	This HSPA1L antibody is available for research use only.



## Description

In cooperation with other chaperones, Hsp70s stabilize preexistent proteins against aggregation and mediate the folding of newly translated polypeptides in the cytosol as well as within organelles. These chaperones participate in all these processes through their ability to recognize nonnative conformations of other proteins. They bind extended peptide segments with a net hydrophobic character exposed by polypeptides during translation and membrane translocation, or following stress-induced damage.

## Application Notes

Titration of the HSPA1L antibody may be required due to differences in protocols and secondary/substrate sensitivity.

## Immunogen

A portion of amino acids 576-603 from the human protein was used as the immunogen for this HSPA1L antibody.

## Storage

Aliquot the HSPA1L antibody and store frozen at -20oC or colder. Avoid repeated freeze-thaw cycles.