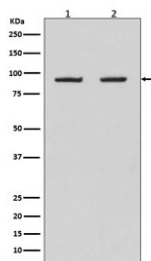


HSP90AB1 Antibody / HSP90 beta [clone CCC-8] (RQ5207)

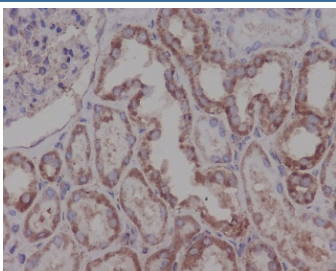
Catalog No.	Formulation	Size
RQ5207	Antibody in PBS with 0.02% sodium azide, 50% glycerol and 0.4-0.5mg/ml BSA	100 ul

[Bulk quote request](#)

Availability	1-2 weeks
Species Reactivity	Human
Format	Purified
Host	Rabbit
Clonality	Rabbit Monoclonal
Isotype	Rabbit IgG
Clone Name	CCC-8
Purity	Affinity purified
UniProt	P08238
Applications	Western Blot : 1:500-1:2000 Immunohistochemistry (FFPE) : 1:50-1:200
Limitations	This HSP90AB1 antibody is available for research use only.



Western blot testing of human 1) HeLa and 2) Raji cell lysate with HSP90AB1 antibody. Predicted molecular weight: 84-90 kDa.



IHC staining of FFPE human kidney tissue with HSP90AB1 antibody. HIER: boil tissue sections in pH6, 10mM citrate buffer, for 10-20 min and allow to cool before testing.

Description

The HSP90AB1 gene encodes a member of the heat shock protein 90 family; these proteins are involved in signal transduction, protein folding and degradation and morphological evolution. This gene encodes the constitutive form of the cytosolic 90 kDa heat-shock protein and is thought to play a role in gastric apoptosis and inflammation. [RefSeq]

Application Notes

Optimal dilution of the HSP90AB1 antibody should be determined by the researcher.

Immunogen

A synthetic peptide specific to human Hsp90 beta / HSP90AB1 was used as the immunogen for the HSP90AB1 antibody.

Storage

Store the HSP90AB1 antibody at -20oC.