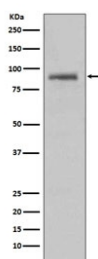


HSP90AA1 Antibody / HSP90 alpha [clone CCF-8] (RQ5193)

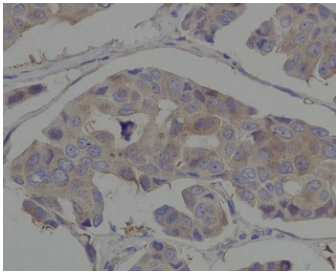
Catalog No.	Formulation	Size
RQ5193	Antibody in PBS with 0.02% sodium azide, 50% glycerol and 0.4-0.5mg/ml BSA	100 ul

[Bulk quote request](#)

Availability	1-2 weeks
Species Reactivity	Human
Format	Purified
Host	Rabbit
Clonality	Rabbit Monoclonal
Isotype	Rabbit IgG
Clone Name	CCF-8
Purity	Affinity purified
UniProt	P07900
Localization	Cell membrane, cytoplasmic, nuclear
Applications	Western Blot : 1:500-1:2000 Immunohistochemistry (FFPE) : 1:50-1:200
Limitations	This HSP90AA1 antibody is available for research use only.



Western blot testing of human HeLa cell lysate with HSP90AA1 antibody. Predicted molecular weight: 86-90 kDa.



IHC staining of FFPE human breast cancer with HSP90AA1 antibody. HIER: boil tissue sections in pH6, 10mM citrate buffer, for 10-20 min and allow to cool before testing.

Description

HSP90 alpha is a molecular chaperone that promotes the maturation, structural maintenance and proper regulation of specific target proteins involved for instance in cell cycle control and signal transduction. Undergoes a functional cycle that is linked to its ATPase activity which is essential for its chaperone activity. This cycle probably induces conformational changes in the client proteins, thereby causing their activation. Interacts dynamically with various co-chaperones that modulate its substrate recognition, ATPase cycle and chaperone function. [UniProt]

Application Notes

Optimal dilution of the HSP90AA1 antibody should be determined by the researcher.

Immunogen

A synthetic peptide specific to human HSP90 alpha / HSP90AA1 was used as the immunogen for the HSP90AA1 antibody.

Storage

Store the HSP90AA1 antibody at -20oC.