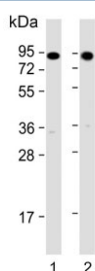


## hsp90a.1 Antibody (F54476)

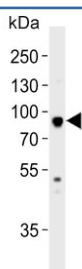
Catalog No.	Formulation	Size
F54476-0.4ML	In 1X PBS, pH 7.4, with 0.09% sodium azide	0.4 ml
F54476-0.08ML	In 1X PBS, pH 7.4, with 0.09% sodium azide	0.08 ml

[Bulk quote request](#)

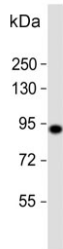
<b>Availability</b>	1-3 business days
<b>Species Reactivity</b>	Zebrafish
<b>Format</b>	Purified
<b>Host</b>	Rabbit
<b>Clonality</b>	Polyclonal (rabbit origin)
<b>Isotype</b>	Rabbit Ig
<b>Purity</b>	Antigen affinity purified
<b>UniProt</b>	Q90474
<b>Applications</b>	Western Blot : 1:500-1:2000 Immunohistochemistry (FFPE) : 1:25
<b>Limitations</b>	This hsp90a.1 antibody is available for research use only.



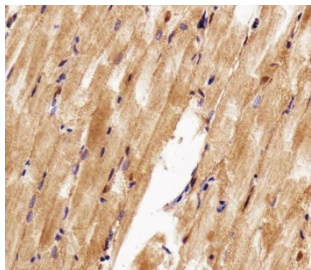
Western blot testing of zebrafish 1) muscle and 2) whole lysate with hsp90a.1 antibody. Predicted molecular weight ~83 kDa.



Western blot testing of zebrafish heart lysate with hsp90a.1 antibody. Predicted molecular weight ~83 kDa.



Western blot testing of zebrafish ZF4 cell lysate with hsp90a.1 antibody. Predicted molecular weight ~83 kDa.



IHC testing of FFPE human skeletal muscle tissue with hsp90a.1 antibody. HIER: steam section in pH6 citrate buffer for 20 min and allow to cool prior to staining.

## Description

Molecular chaperone that promotes the maturation, structural maintenance and proper regulation of specific target proteins involved for instance in cell cycle control and signal transduction. Undergoes a functional cycle that is linked to its ATPase activity. This cycle probably induces conformational changes in the client proteins, thereby causing their activation. Interacts dynamically with various co-chaperones that modulate its substrate recognition, ATPase cycle and chaperone function (By similarity). Plays a key role in slow and fast muscle development in the embryo. Plays a role in myosin expression and assembly.

## Application Notes

The stated application concentrations are suggested starting points. Titration of the hsp90a.1 antibody may be required due to differences in protocols and secondary/substrate sensitivity.

## Immunogen

A portion of amino acids 229-263 from the zebrafish protein was used as the immunogen for the hsp90a.1 antibody.

## Storage

Aliquot the hsp90a.1 antibody and store frozen at -20oC or colder. Avoid repeated freeze-thaw cycles.