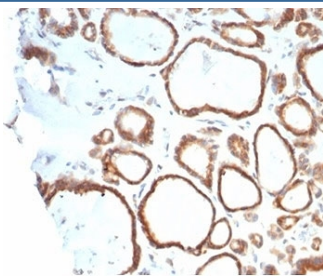


## HSP90 beta Antibody [clone HSP90AB1/4970] (V4025)

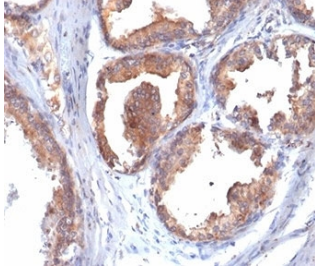
Catalog No.	Formulation	Size
V4025-100UG	0.2 mg/ml in 1X PBS with 0.1 mg/ml BSA (US sourced), 0.05% sodium azide	100 ug
V4025-20UG	0.2 mg/ml in 1X PBS with 0.1 mg/ml BSA (US sourced), 0.05% sodium azide	20 ug
V4025SAF-100UG	1 mg/ml in 1X PBS; BSA free, sodium azide free	100 ug

### Bulk quote request

<b>Availability</b>	1-3 business days
<b>Species Reactivity</b>	Human
<b>Format</b>	Purified
<b>Host</b>	Mouse
<b>Clonality</b>	Monoclonal (mouse origin)
<b>Isotype</b>	Mouse IgG2a
<b>Clone Name</b>	HSP90AB1/4970
<b>Purity</b>	Protein A/G affinity
<b>UniProt</b>	P08238
<b>Localization</b>	Cytoplasm
<b>Applications</b>	Immunohistochemistry (FFPE) : 1-2ug/ml
<b>Limitations</b>	This HSP90 beta antibody is available for research use only.



IHC staining of FFPE human thyroid tissue with HSP90AB1 antibody (clone HSP90AB1/4970). HIER: boil tissue sections in pH 9 10mM Tris with 1mM EDTA for 20 min and allow to cool before testing.



IHC staining of FFPE human prostate tissue with HSP90AB1 antibody (clone HSP90AB1/4970). HIER: boil tissue sections in pH 9 10mM Tris with 1mM EDTA for 20 min and allow to cool before testing.

## Description

This gene encodes a member of the heat shock protein 90 family; these proteins are involved in signal transduction, protein folding and degradation and morphological evolution. This gene encodes the constitutive form of the cytosolic 90 kDa heat-shock protein and is thought to play a role in gastric apoptosis and inflammation. Alternative splicing results in multiple transcript variants. Pseudogenes have been identified on multiple chromosomes.

## Application Notes

Optimal dilution of the HSP90 beta antibody should be determined by the researcher.

## Immunogen

Recombinant full-length human protein was used as the immunogen for the HSP90 beta antibody.

## Storage

Aliquot the HSP90 beta antibody and store frozen at -20°C or colder. Avoid repeated freeze-thaw cycles.