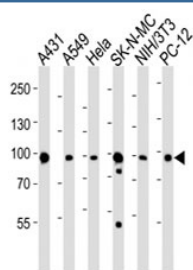


HSP90 Antibody / HSP90AA1 (F52565)

Catalog No.	Formulation	Size
F52565-0.4ML	In 1X PBS, pH 7.4, with 0.09% sodium azide	0.4 ml
F52565-0.08ML	In 1X PBS, pH 7.4, with 0.09% sodium azide	0.08 ml

[Bulk quote request](#)

Availability	1-3 business days
Species Reactivity	Human, Mouse, Rat
Predicted Reactivity	Bovine, Chicken, Drosophila, Hamster, Pig, Primate, Rabbit, Zebrafish
Format	Antigen affinity purified
Clonality	Polyclonal (rabbit origin)
Isotype	Rabbit Ig
Purity	Antigen affinity
UniProt	P07900
Applications	Western Blot : 1:1000
Limitations	This HSP90 antibody is available for research use only.



Western blot analysis of lysate from A431, A549, HeLa, SK-N-MC, mouse NIH3T3, rat PC-12 cell line using HSP90 antibody at 1:1000.

Description

Molecular chaperone that promotes the maturation, structural maintenance and proper regulation of specific target proteins involved for instance in cell cycle control and signal transduction. Undergoes a functional cycle that is linked to its ATPase activity. This cycle probably induces conformational changes in the client proteins, thereby causing their activation. Interacts dynamically with various co-chaperones that modulate its substrate recognition, ATPase cycle and chaperone function.

Application Notes

Titration of the HSP90 antibody may be required due to differences in protocols and secondary/substrate sensitivity.

Immunogen

This HSP90 antibody was produced from a rabbit immunized with a KLH conjugated synthetic peptide between 57-89 amino acids from the N-terminal region of human HSP90AA1.

Storage

Aliquot the HSP90 antibody and store frozen at -20oC or colder. Avoid repeated freeze-thaw cycles.