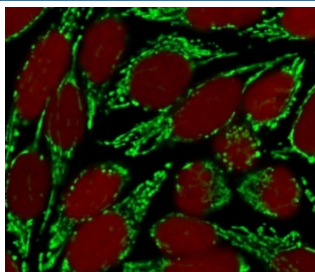


HSP60 Antibody / HSPD1 [clone SRPR60] (V7117)

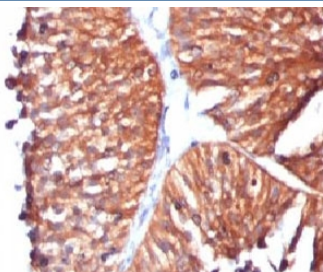
Catalog No.	Formulation	Size
V7117-100UG	0.2 mg/ml in 1X PBS with 0.1 mg/ml BSA (US sourced) and 0.05% sodium azide	100 ug
V7117-20UG	0.2 mg/ml in 1X PBS with 0.1 mg/ml BSA (US sourced) and 0.05% sodium azide	20 ug
V7117SAF-100UG	1 mg/ml in 1X PBS; BSA free, sodium azide free	100 ug
V7117IHC-7ML	Prediluted in 1X PBS with 0.1 mg/ml BSA (US sourced) and 0.05% sodium azide; *For IHC use only*	7 ml

[Bulk quote request](#)

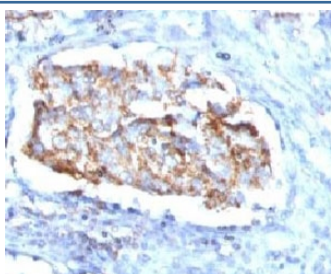
Availability	1-3 business days
Species Reactivity	Human
Format	Purified
Host	Mouse
Clonality	Monoclonal (mouse origin)
Isotype	Mouse IgG1, kappa
Clone Name	SRPR60
Purity	Protein G affinity chromatography
UniProt	P10809
Localization	Cytoplasm (mitochondria)
Applications	Immunofluorescence : 1-2ug/ml Western Blot : 1-2ug/ml Immunohistochemistry (FFPE) : 1-2ug/ml for 30 min at RT Prediluted IHC Only Format : incubate for 30 min at RT (1)
Limitations	This HSP60 antibody is available for research use only.



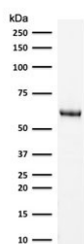
Immunofluorescent staining of MeOH-fixed human HeLa cells with HSP60 antibody (clone SRPR60, green) and Reddot nuclear stain (red).



IHC testing of FFPE human bladder carcinoma and HSP60 antibody (clone SRPR60). Staining of formalin-fixed tissues requires boiling tissue sections in pH 9 10mM Tris with 1mM EDTA for 10-20 min followed by cooling at RT for 20 min.



IHC testing of FFPE human lung carcinoma and HSP60 antibody (clone SRPR60). Staining of formalin-fixed tissues requires boiling tissue sections in pH 9 10mM Tris with 1mM EDTA for 10-20 min followed by cooling at RT for 20 min.



Western blot testing of human HeLa lysate with HSP60 antibody (clone SRPR60). Predicted molecular weight: ~60 kDa.

Description

HSP60 has been implicated in mitochondrial protein import and macromolecular assembly. May facilitate the correct folding of imported proteins. May also prevent misfolding and promote the refolding and proper assembly of unfolded polypeptides generated under stress conditions in the mitochondrial matrix. [UniProt]

Application Notes

Optimal dilution of the HSP60 antibody should be determined by the researcher.

1. The prediluted format is supplied in a dropper bottle and is optimized for use in IHC. After epitope retrieval step (if required), drip mAb solution onto the tissue section and incubate at RT for 30 min.

Immunogen

Recombinant human HSPD1 protein was used as the immunogen for the HSP60 antibody.

Storage

Store the HSP60 antibody at 2-8°C (with azide) or aliquot and store at -20°C or colder (without azide).

