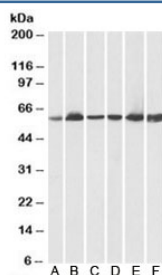


HSP60 Antibody / HSPD1 (R36413)

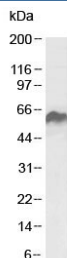
Catalog No.	Formulation	Size
R36413-100UG	0.5 mg/ml in 1X TBS, pH7.3, with 0.5% BSA (US sourced) and 0.02% sodium azide	100 ug

[Bulk quote request](#)

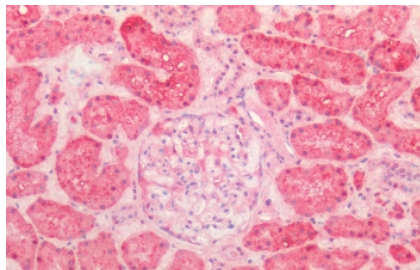
Availability	1-3 business days
Species Reactivity	Human, Pig, Rat
Predicted Reactivity	Cow, Dog
Format	Antigen affinity purified
Host	Goat
Clonality	Polyclonal (goat origin)
Isotype	Goat Ig
Purity	Antigen affinity
Gene ID	3329
Applications	Western Blot : 0.01-0.03ug/ml Immunohistochemistry (FFPE) : 5ug/ml Immunofluorescence (FFPE) : 10 ug/ml ELISA (peptide) LOD : 1:64000
Limitations	This HSP60 antibody is available for research use only.



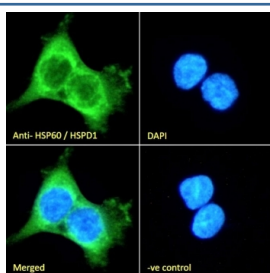
Western blot testing of human A) heart, B) kidney, C) liver lysates and pig D) heart, E) kidney, F) liver lysates using HSP60 antibody at 0.03ug/ml. Predicted molecular weight: ~61 kDa.



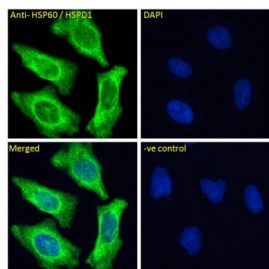
Western blot testing of rat kidney lysate using HSP60 antibody at 0.1ug/ml. Predicted molecular weight: ~61 kDa.



IHC staining of FFPE human kidney tissue with HSP60 antibody at 5ug/ml. Required HIER: steamed antigen retrieval with pH6 citrate buffer; AP-staining.



IF/ICC staining of fixed and permeabilized human A431 cells with HSP60 antibody (green) at 10ug/ml and DAPI nuclear stain (blue).



IF/ICC staining of fixed and permeabilized human HeLa cells with HSP60 antibody (green) at 10ug/ml and DAPI nuclear stain (blue).

Description

Additional name(s) for this target protein: HSPD1, Heat shock 60kDa protein 1, Chaperonin, GROEL

Application Notes

Optimal dilution of the HSP60 antibody should be determined by the researcher.

Immunogen

Amino acids NLEDVQPHDLGK were used as the immunogen for this HSP60 antibody.

Storage

Aliquot and store the HSP60 antibody at -20oC.

