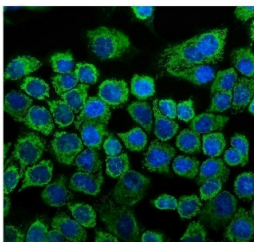


HSP60 Antibody / HSPD1 (R30272)

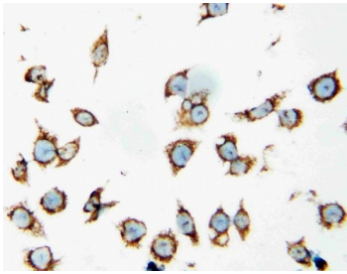
| Catalog No. | Formulation | Size |
|-------------|---|--------|
| R30272 | 0.5mg/ml if reconstituted with 0.2ml sterile DI water | 100 ug |

Bulk quote request

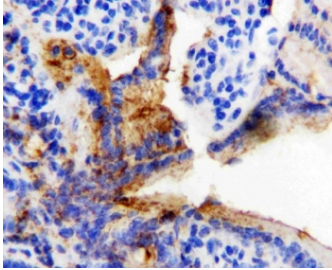
| | |
|---------------------------|--|
| Availability | 1-3 business days |
| Species Reactivity | Human, Mouse, Rat |
| Format | Antigen affinity purified |
| Host | Rabbit |
| Clonality | Polyclonal (rabbit origin) |
| Isotype | Rabbit IgG |
| Purity | Antigen affinity |
| Buffer | Lyophilized from 1X PBS with 2.5% BSA and 0.025% sodium azide/thimerosal |
| UniProt | P63039 |
| Localization | Cytoplasm (mitochondria) |
| Applications | Western Blot : 0.5-1ug/ml Immunohistochemistry (FFPE) : 1-2ug/ml Immunofluorescence : 5ug/ml Immunocytochemistry : 1-2ug/ml Flow Cytometry : 1-3ug/million cells |
| Limitations | This HSP60 antibody is available for research use only. |



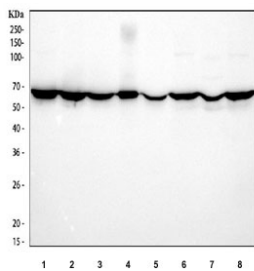
Immunofluorescent staining of FFPE human A431 cells with HSP60 antibody (green) and DAPI nuclear stain (blue). HIER: steam section in pH6 citrate buffer for 20 min.



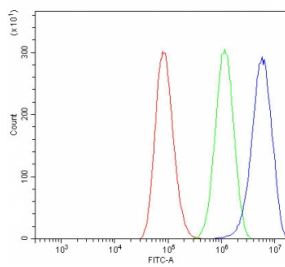
ICC staining of human SMMC-7721 cells with HSP60 antibody.



IHC staining of FFPE rat intestine tissue with HSP60 antibody. HIER: boil tissue sections in pH6 citrate buffer for 20 min and allow to cool before testing.



Western blot testing of 1) human HepG2, 2) human HeLa, 3) human A549, 4) human PC-3, 5) rat lung, 6) rat liver, 7) mouse lung and 8) mouse liver tissue lysate with HSP60 antibody. Predicted molecular weight ~60 kDa.



Flow cytometry testing of fixed and permeabilized human A549 cells with HSP60 antibody at 1ug/million cells (blocked with goat sera); Red=cells alone, Green=isotype control, Blue= HSP60 antibody.

Description

Heat shock 60KD protein is a member of the chaperonin class of protein factors and the nuclear encoded mitochondrial HSP60 is required for the assembly into oligomeric complexes of proteins imported into the mitochondrial matrix. HSP60 is linked head to head comprising approximately 17 kb and consist of 12 exons. It can downregulate adaptive immune responses by upregulating Tregs innately through [TLR2](#) signaling.

Application Notes

Variations in secondary/substrate sensitivities and test protocols may require the HSP60 antibody to be titrated for optimal performance.

Immunogen

An amino acid sequence from the C-terminus of rat HSP60 (YDAMLGDFVNMVEK) was used as the immunogen for this HSP60 antibody.

Storage

The lyophilized HSP60 antibody can be stored at 4oC to -20oC. After reconstitution, aliquot and store at -20oC. Avoid

repeated freeze/thaws.