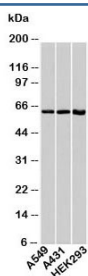


## HSP60 Antibody / HSPD1 (N1073)

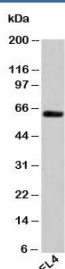
Catalog No.	Formulation	Size
N1073-100UG	0.5 mg/ml in 1X PBS with 0.1 mg/ml BSA (US sourced), 0.05% sodium azide	100 ug
N1073-25UG	0.5 mg/ml in 1X PBS with 0.1 mg/ml BSA (US sourced), 0.05% sodium azide	25 ug

[Bulk quote request](#)

Species Reactivity	Human
Format	Purified
Host	Rabbit
Clonality	Polyclonal (rabbit origin)
Isotype	Rabbit IgG
Purity	Protein A affinity chromatography
Buffer	1X PBS, pH 7.4
Gene ID	3329
Applications	Western Blot : 1-3ug/ml
Limitations	This <b>HSP60 antibody</b> is available for research use only.



Western blot testing of human samples with HSP60 antibody at 1ug/ml.



Western blot testing of mouse samples with HSP60 antibody at 1ug/ml.

## Description

First described in relation to heat shock, HSPs are now known to be produced in response to additional stressful conditions including cold and UV light, as well as during wound healing. Heat shock protein 60 (HSP60) is responsible for protein transportation from the cytoplasm to the mitochondrial matrix and the subsequent refolding of the transported proteins. HSP60 also functions as a molecular chaperone, or chaperonin, assisting linear amino acid chains to fold into their three-dimensional structure.

## Application Notes

Provided assay concentrations are suggestions only, HSP60 antibody titration may be required for optimal results.

## Immunogen

A recombinant protein fragment from human HSP60 was used as the immunogen for this antibody.

## Storage

Aliquot the HSP60 antibody and store frozen at -20oC or colder to avoid repeated freeze-thaw cycles.

## Alternate Names

Chaperonin 60-KD (CPN60), GROEL, HLD4, HSP65, HSPD1, HuCHA60, Mitochondrial matrix protein P1, P60 lymphocyte protein, Short heat shock protein 60 Hsp60s1, Spastic paraplegia 13 (SPG13), HSP60 antibody