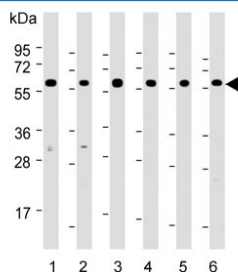


Hsp60 Antibody (F54325)

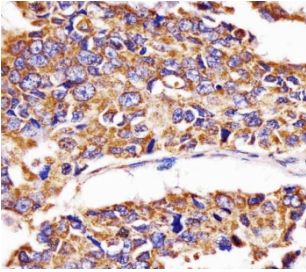
Catalog No.	Formulation	Size
F54325-0.2ML	In 1X PBS, pH 7.4, with 0.09% sodium azide	0.2 ml
F54325-0.05ML	In 1X PBS, pH 7.4, with 0.09% sodium azide	0.05 ml

[Bulk quote request](#)

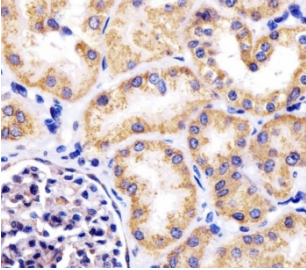
Availability	1-3 business days
Species Reactivity	Human, Mouse
Format	Purified
Host	Rabbit
Clonality	Polyclonal (rabbit origin)
Isotype	Rabbit Ig
Purity	Antigen affinity purified
UniProt	P10809
Localization	Cytoplasmic
Applications	Western Blot : 1:500-1:2000 Immunohistochemistry (FFPE) : 1:25 Immunofluorescence : 1:25
Limitations	This Hsp60 antibody is available for research use only.



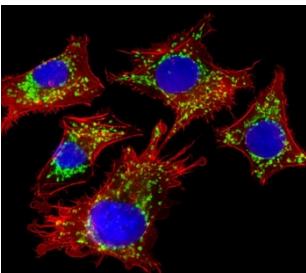
Western blot testing of human 1) HeLa, 2) MCF7, 3) HepG2, 4) Jurkat, 5) mouse NIH 3T3 and 6) mouse thymus lysate with Hsp60 antibody. Predicted molecular weight: ~60 kDa.



IHC testing of FFPE human lung adenocarcinoma tissue with Hsp60 antibody. HIER: steam section in pH6 citrate buffer for 20 min and allow to cool prior to staining.



IHC testing of FFPE human kidney tissue with Hsp60 antibody. HIER: steam section in pH6 citrate buffer for 20 min and allow to cool prior to staining.



Immunofluorescent staining of fixed and permeabilized human HepG2 cells with Hsp60 antibody (green), DAPI nuclear stain (blue) and anti-Actin (red).

Description

Implicated in mitochondrial protein import and macromolecular assembly. May facilitate the correct folding of imported proteins. May also prevent misfolding and promote the refolding and proper assembly of unfolded polypeptides generated under stress conditions in the mitochondrial matrix.

Application Notes

The stated application concentrations are suggested starting points. Titration of the Hsp60 antibody may be required due to differences in protocols and secondary/substrate sensitivity.

Immunogen

A portion of amino acids 340-374 from the human protein was used as the immunogen for the Hsp60 antibody.

Storage

Aliquot the Hsp60 antibody and store frozen at -20oC or colder. Avoid repeated freeze-thaw cycles.

