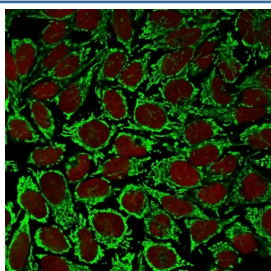


HSP60 Antibody [clone AE-1] (V8546)

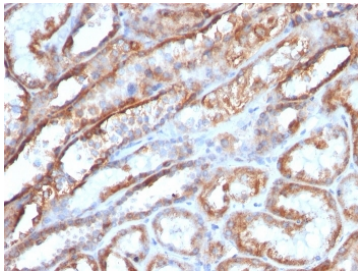
Catalog No.	Formulation	Size
V8546-100UG	0.2 mg/ml in 1X PBS with 0.1 mg/ml BSA (US sourced) and 0.05% sodium azide	100 ug
V8546-20UG	0.2 mg/ml in 1X PBS with 0.1 mg/ml BSA (US sourced) and 0.05% sodium azide	20 ug
V8546SAF-100UG	1 mg/ml in 1X PBS; BSA free, sodium azide free	100 ug

Bulk quote request

Availability	1-3 business days
Species Reactivity	Human
Format	Purified
Clonality	Monoclonal (mouse origin)
Isotype	Mouse IgG1, kappa
Clone Name	AE-1
Purity	Protein G affinity chromatography
UniProt	P10809
Localization	Cytoplasm (mitochondria)
Applications	Flow Cytometry : 1-2ug/million cells Immunofluorescence : 1-2ug/ml Western Blot : 1-2ug/ml Immunohistochemistry (FFPE) : 1-2ug/ml for 30 minutes at RT
Limitations	This HSP60 antibody is available for research use only.



Immunofluorescent staining of PFA-fixed human HeLa cells with HSP60 antibody (clone AE-1, green) and Reddot nuclear stain (red).



IHC staining of FFPE human renal cell carcinoma with HSP60 antibody (clone AE-1).
HIER: boil tissue sections in pH 9 10mM Tris with 1mM EDTA for 20 min and allow to cool before testing.

Description

Recognizes a 60kDa protein, identified as the heat shock protein 60 (hsp60). A wide variety of environmental and pathophysiological stressful conditions trigger the synthesis of a family of proteins known as heat shock proteins (hsps). Hsp60 is a potential antigen in a number of autoimmune diseases. In human arthritis and in experimentally induced arthritis in animals, disease development coincides with the development of immune reactivity directed against not only bacterial hsp60, but also against its mammalian homolog.

Application Notes

Optimal dilution of the HSP60 antibody should be determined by the researcher.

Immunogen

Recombinant human protein was used as the immunogen for the HSP60 antibody.

Storage

Store the HSP60 antibody at 2-8oC (with azide) or aliquot and store at -20oC or colder (without azide).