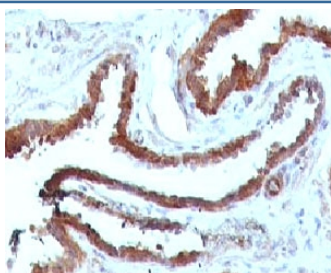


## HSP27 Antibody [clone SRPR27] (V7102)

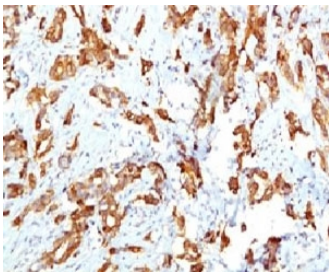
Catalog No.	Formulation	Size
V7102-100UG	0.2 mg/ml in 1X PBS with 0.1 mg/ml BSA (US sourced) and 0.05% sodium azide	100 ug
V7102-20UG	0.2 mg/ml in 1X PBS with 0.1 mg/ml BSA (US sourced) and 0.05% sodium azide	20 ug
V7102SAF-100UG	1 mg/ml in 1X PBS; BSA free, sodium azide free	100 ug
V7102IHC-7ML	Prediluted in 1X PBS with 0.1 mg/ml BSA (US sourced) and 0.05% sodium azide; *For IHC use only*	7 ml

### Bulk quote request

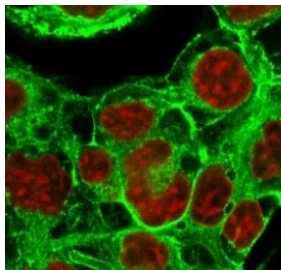
<b>Availability</b>	1-3 business days
<b>Species Reactivity</b>	Human
<b>Format</b>	Purified
<b>Clonality</b>	Monoclonal (mouse origin)
<b>Isotype</b>	Mouse IgG1, kappa
<b>Clone Name</b>	SRPR27
<b>Purity</b>	Protein G affinity chromatography
<b>UniProt</b>	P04792
<b>Localization</b>	Predominantly cytoplasmic with some nuclear
<b>Applications</b>	Immunofluorescence : 1-2ug/ml Immunohistochemistry (FFPE) : 1-2ug/ml for 30 min at RT Prediluted IHC Only Format : incubate for 30 min at RT (1)
<b>Limitations</b>	This HSP27 antibody is available for research use only.



IHC testing of FFPE human prostate carcinoma and HSP27 antibody (clone SRPR27). Staining of formalin-fixed tissues requires boiling tissue sections in pH 9 10mM Tris with 1mM EDTA for 10-20 min followed by cooling at RT for 20 min.



IHC testing of FFPE human breast carcinoma and HSP27 antibody (clone SRPR27). Staining of formalin-fixed tissues requires boiling tissue sections in pH 9 10mM Tris with 1mM EDTA for 10-20 min followed by cooling at RT for 20 min.



Immunofluorescent staining of PFA-fixed human MCF7 cells with HSP27 antibody (clone SRPR27, green) and Reddot nuclear stain (red).

## Description

HSP27 is induced by environmental stress and developmental changes. It is involved in stress resistance and actin organization and translocates from the cytoplasm to the nucleus upon stress induction. [RefSeq]

## Application Notes

Optimal dilution of the HSP27 antibody should be determined by the researcher.

1. The prediluted format is supplied in a dropper bottle and is optimized for use in IHC. After epitope retrieval step (if required), drip mAb solution onto the tissue section and incubate at RT for 30 min.

## Immunogen

Recombinant human HSPB1 protein was used as the immunogen for the HSP27 antibody.

## Storage

Store the HSP27 antibody at 2-8°C (with azide) or aliquot and store at -20°C or colder (without azide).