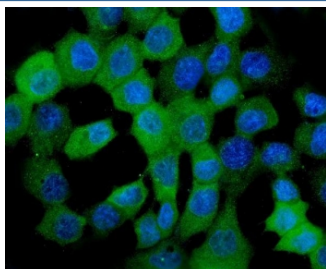


## HSP22 Antibody / HSPB8 [clone 7D8] (RQ5936)

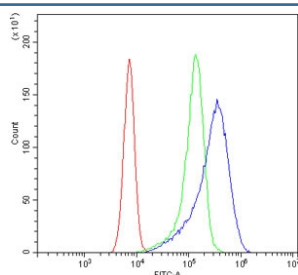
Catalog No.	Formulation	Size
RQ5936	0.5mg/ml if reconstituted with 0.2ml sterile DI water	100 ug

**Bulk quote request**

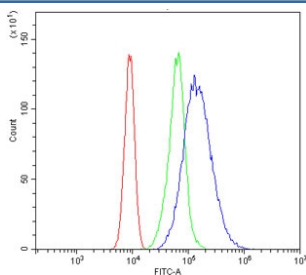
<b>Availability</b>	1-3 business days
<b>Species Reactivity</b>	Human, Rat
<b>Format</b>	Antigen affinity purified
<b>Clonality</b>	Monoclonal (mouse origin)
<b>Isotype</b>	Mouse IgG2b
<b>Clone Name</b>	7D8
<b>Purity</b>	Affinity purified
<b>Buffer</b>	Lyophilized from 1X PBS with 2% Trehalose and 0.025% sodium azide
<b>UniProt</b>	Q9UJY1
<b>Applications</b>	Western Blot : 0.5-1ug/ml Flow Cytometry : 1-3ug/million cells Immunofluorescence : 2-4ug/ml
<b>Limitations</b>	This Hsp22 antibody is available for research use only.



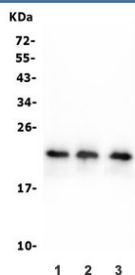
Immunofluorescent staining of FFPE human A431 cells with HSP22 antibody (green) and DAPI nuclear stain (blue). HIER: steam section in pH6 citrate buffer for 20 min.



Flow cytometry testing of human U-2 OS cells with HSP22 antibody at 1ug/million cells (blocked with goat sera); Red=cells alone, Green=isotype control, Blue= HSP22 antibody.



Flow cytometry testing of human Caco-2 cells with HSP22 antibody at 1ug/million cells (blocked with goat sera); Red=cells alone, Green=isotype control, Blue= HSP22 antibody.



Western blot testing of 1) human HeLa, 2) human T-47D and 3) rat RH35 lysate with HSP22 antibody. Expected molecular weight: 22-27 kDa.

## Description

Heat shock protein beta-8 is a protein that in humans is encoded by the HSPB8 gene. The protein encoded by this gene belongs to the superfamily of small heat-shock proteins containing a conservative alpha-crystallin domain at the C-terminal part of the molecule. The expression of this gene is induced by estrogen in estrogen receptor-positive breast cancer cells, and this protein also functions as a chaperone in association with Bag3, a stimulator of macroautophagy. Thus, this gene appears to be involved in regulation of cell proliferation, apoptosis, and carcinogenesis, and mutations in this gene have been associated with different neuromuscular diseases, including Charcot-Marie-Tooth disease.

## Application Notes

Optimal dilution of the Hsp22 antibody should be determined by the researcher.

## Immunogen

Recombinant human protein (amino acids M1-T196) was used as the immunogen for the Hsp22 antibody.

## Storage

After reconstitution, the Hsp22 antibody can be stored for up to one month at 4°C. For long-term, aliquot and store at -20°C. Avoid repeated freezing and thawing.