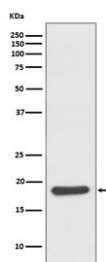


Hsp20 Antibody / HSPB6 [clone IAD-8] (RQ4701)

Catalog No.	Formulation	Size
RQ4701	Antibody in PBS with 0.02% sodium azide, 50% glycerol and 0.4-0.5mg/ml BSA	100 ul

[Bulk quote request](#)

Availability	1-2 weeks
Species Reactivity	Human, Mouse
Format	Purified
Clonality	Rabbit Monoclonal
Isotype	Rabbit IgG
Clone Name	IAD-8
Purity	Affinity purified
UniProt	O14558
Applications	Western Blot : 1:5000-1:10000
Limitations	This Hsp20 antibody is available for research use only.



Western blot testing of mouse skeletal muscle lysate with Hsp20 antibody. Predicted molecular weight: 17-20 kDa.

Description

Hsp20 likely plays a role in smooth muscle relaxation.

Application Notes

Optimal dilution of the Hsp20 antibody should be determined by the researcher.

Immunogen

A synthetic peptide specific to human Hsp20 / HSPB6 was used as the immunogen for the Hsp20 antibody.

Storage

Store the Hsp20 antibody at -20oC.