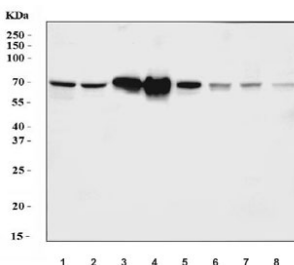


HPX Antibody / Hemopexin (RQ7000)

Catalog No.	Formulation	Size
RQ7000	0.5mg/ml if reconstituted with 0.2ml sterile DI water	100 ug

[Bulk quote request](#)

Availability	1-3 business days
Species Reactivity	Human, Mouse, Rat
Format	Antigen affinity purified
Host	Rabbit
Clonality	Polyclonal (rabbit origin)
Isotype	Rabbit IgG
Purity	Antigen affinity purified
Buffer	Lyophilized from 1X PBS with 2% Trehalose
UniProt	P02790
Applications	Western Blot : 0.5-1 ug/ml Direct ELISA : 0.1-0.5ug/ml
Limitations	This HPX antibody is available for research use only.



Western blot testing of 1) human HepG2, 2) human HCCT, 3) human HCCP, 4) human placenta, 5) rat liver, 6) rat RH35, 7) mouse liver and 8) mouse HEPA1-6 cell lysate with HPX antibody. Predicted molecular weight: 52-75 kDa depending on glycosylation level.

Description

Hemopexin (or haemopexin; Hpx; Hx), also known as beta-1B-glycoprotein, is a glycoprotein that in humans is encoded by the HPX gene and belongs to hemopexin family of proteins. This gene encodes a plasma glycoprotein that binds heme with high affinity. The encoded protein is an acute phase protein that transports heme from the plasma to the liver and may be involved in protecting cells from oxidative stress.

Application Notes

Optimal dilution of the HPX antibody should be determined by the researcher.

Immunogen

Recombinant human protein (amino acids V97-A447) was used as the immunogen for the HPX antibody.

Storage

After reconstitution, the HPX antibody can be stored for up to one month at 4oC. For long-term, aliquot and store at -20oC. Avoid repeated freezing and thawing.