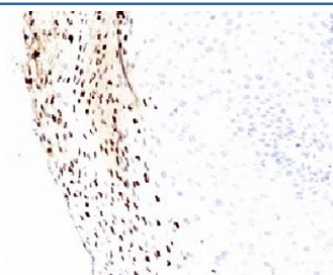


## HPV-16 L1 Antibody [clone MCAPL1] (V7185)

Catalog No.	Formulation	Size
V7185-100UG	0.2 mg/ml in 1X PBS with 0.1 mg/ml BSA (US sourced) and 0.05% sodium azide	100 ug
V7185-20UG	0.2 mg/ml in 1X PBS with 0.1 mg/ml BSA (US sourced) and 0.05% sodium azide	20 ug
V7185SAF-100UG	1 mg/ml in 1X PBS; BSA free, sodium azide free	100 ug

[Bulk quote request](#)

<b>Availability</b>	1-3 business days
<b>Species Reactivity</b>	Type 16 of Human Papilloma Virus (HPV-16)
<b>Format</b>	Purified
<b>Clonality</b>	Monoclonal (mouse origin)
<b>Isotype</b>	Mouse IgG2a, kappa
<b>Clone Name</b>	MCAPL1
<b>Purity</b>	Protein G affinity chromatography
<b>UniProt</b>	P03101
<b>Localization</b>	Nuclear
<b>Applications</b>	Immunohistochemistry (FFPE) : 1-2ug/ml for 30 min at RT (1)
<b>Limitations</b>	This HPV-16 L1 antibody is available for research use only.



IHC testing of FFPE human cervix with HPV-16 L1 antibody (clone MCAPL1). FFPE testing requires sections to be boiled in pH 9 10mM Tris with 1mM EDTA for 10-20 minutes, followed by cooling at RT for 20 minutes, prior to staining.

## Description

Infection with specific types of HPV has been associated with an increased risk of developing cervical neoplasia. HPV types 6 and 11 have been associated with relatively benign diseases such as genital warts but types 16 and 18 are

strongly associated with cervical, vaginal, and vulvar malignancies.

## **Application Notes**

Titration of the HPV-16 L1 antibody may be required for optimal performance.

## **Immunogen**

Human papilloma virus type 16, major capsid protein L1, was used as the immunogen for the HPV-16 L1 antibody.

## **Storage**

Store the HPV-16 L1 antibody at 2-8°C (with azide) or aliquot and store at -20°C or colder (without azide).