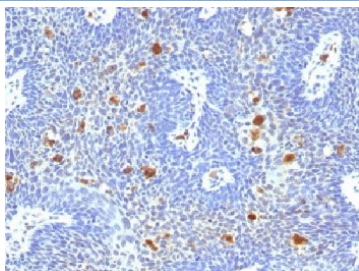


HPV-16 E6 Antibody [clone HPV16/1296] (V3488)

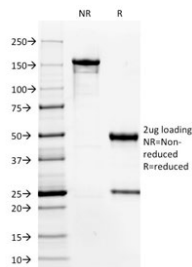
Catalog No.	Formulation	Size
V3488-100UG	0.2 mg/ml in 1X PBS with 0.1 mg/ml BSA (US sourced) and 0.05% sodium azide	100 ug
V3488-20UG	0.2 mg/ml in 1X PBS with 0.1 mg/ml BSA (US sourced) and 0.05% sodium azide	20 ug
V3488SAF-100UG	1 mg/ml in 1X PBS; BSA free, sodium azide free	100 ug

[Bulk quote request](#)

Availability	1-3 business days
Species Reactivity	Type 16 of Human Papilloma Virus (HPV-16)
Format	Purified
Host	Mouse
Clonality	Monoclonal (mouse origin)
Isotype	Mouse IgG2a, kappa
Clone Name	HPV16/1296
Purity	Protein G affinity chromatography
UniProt	Not Known
Gene ID	Not Known
Localization	Nuclear
Applications	Immunohistochemistry (FFPE) : 1-2ug/ml for 30 min at RT
Limitations	This HPV-16 E6 antibody is available for research use only.



IHC testing of FFPE human cervix with HPV-16 E6 antibody (clone HPV16/1296).
Required HIER: boil tissue sections in pH 9 10mM Tris with 1mM EDTA for 10-20 min followed by cooling at RT for 20 min.



SDS-PAGE analysis of purified, BSA-free HPV-16 E6 antibody (clone HPV16/1296) as confirmation of integrity and purity.

Description

Reacts with E6 protein of human papilloma virus type 16 (HPV-16). Infection with specific types of HPV has been associated with an increased risk of developing cervical neoplasia. HPV types 6 and 11 have been associated with relatively benign diseases such as genital warts but types 16 and 18 are strongly associated with cervical, vaginal, and vulvar malignancies. The antibody reacts very strongly with formalin-fixed, paraffin-embedded tissues containing HPV-16.

Application Notes

Optimal dilution of the HPV-16 E6 antibody should be determined by the researcher.

Immunogen

HPV-16 E6 peptide (MHQKRTAMFQDPPQERPRKLPQLC) was used as the immunogen for the HPV-16 E6 antibody.

Storage

Store the HPV-16 E6 antibody at 2-8oC (with azide) or aliquot and store at -20oC or colder (without azide).