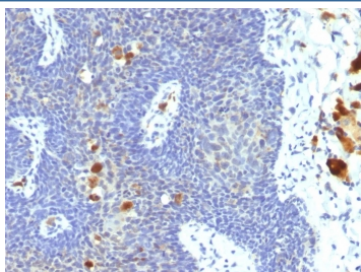


## HPV-16 Antibody / E6 protein [clone 4B12] (V5832)

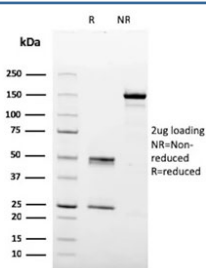
Catalog No.	Formulation	Size
V5832-100UG	0.2 mg/ml in 1X PBS with 0.1 mg/ml BSA (US sourced), 0.05% sodium azide	100 ug
V5832-20UG	0.2 mg/ml in 1X PBS with 0.1 mg/ml BSA (US sourced), 0.05% sodium azide	20 ug
V5832SAF-100UG	1 mg/ml in 1X PBS; BSA free, sodium azide free	100 ug

[Bulk quote request](#)

<b>Availability</b>	1-3 business days
<b>Species Reactivity</b>	Human
<b>Format</b>	Purified
<b>Host</b>	Mouse
<b>Clonality</b>	Monoclonal (mouse origin)
<b>Isotype</b>	Mouse IgG2a, kappa
<b>Clone Name</b>	4B12
<b>Purity</b>	Protein G affinity
<b>Applications</b>	Immunohistochemistry (FFPE) : 1-2ug/ml
<b>Limitations</b>	This HPV-16 antibody is available for research use only.



IHC staining of FFPE human cervix tissue with HPV-16 antibody (clone 4B12). Inset: PBS used in place of primary Ab (secondary Ab negative control). HIER: boil tissue sections in pH 9 10mM Tris with 1mM EDTA for 20 min and allow to cool before testing.



SDS-PAGE analysis of purified, BSA-free HPV-16 antibody (clone 4B12) as confirmation of integrity and purity.

## Description

**Reacts with E6 protein of human papilloma virus type 16 (HPV-16).** Infection with specific types of HPV has been associated with an increased risk of developing cervical neoplasia. HPV types 6 and 11 have been associated with relatively benign diseases such as genital warts but types 16 and 18 are strongly associated with cervical, vaginal, and vulvar malignancies. The antibody reacts very strongly with formalin-fixed, paraffin-embedded tissues containing HPV-16.

## Application Notes

Optimal dilution of the HPV-16 antibody should be determined by the researcher.

## Immunogen

HPV-16 E6 peptide MHQKRTAMFQDPPQERPRKLPQLC was used as the immunogen for the HPV-16 antibody.

## Storage

Aliquot the HPV-16 antibody and store frozen at -20oC or colder. Avoid repeated freeze-thaw cycles.