

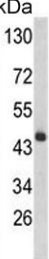
HPD Antibody / 4-hydroxyphenylpyruvate dioxygenase / 4HPPD (F54982)

Catalog No.	Formulation	Size
F54982-0.4ML	In 1X PBS, pH 7.4, with 0.09% sodium azide	0.4 ml
F54982-0.08ML	In 1X PBS, pH 7.4, with 0.09% sodium azide	0.08 ml

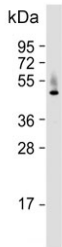
Bulk quote request

Availability	1-3 business days
Species Reactivity	Human, Mouse
Format	Purified
Host	Rabbit
Clonality	Polyclonal (rabbit origin)
Isotype	Rabbit Ig
Purity	Antigen affinity purified
UniProt	P32754
Localization	Cytoplasmic, extracellular
Applications	Flow Cytometry : 1:10-1:50 (1x10e6 cells) Immunohistochemistry (FFPE) : 1:50-1:100 Western Blot : 1:500-1:1000
Limitations	This HPD antibody is available for research use only.

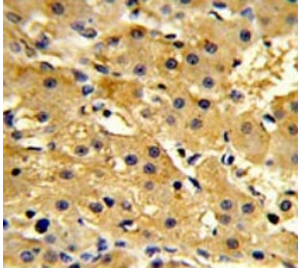
kDa
130
72
55
43
34
26



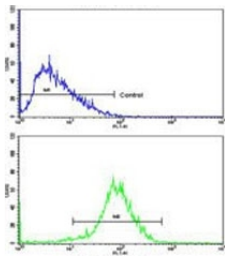
Western blot testing of mouse liver tissue lysate with HPD antibody. Predicted molecular weight ~45 kDa.



Western blot testing of human HepG2 cell lysate with HPD antibody. Predicted molecular weight ~45 kDa.



IHC testing of FFPE human hepatocellular carcinoma tissue with HPD antibody. HIER: steam section in pH6 citrate buffer for 20 min and allow to cool prior to staining.



Flow cytometry testing of human HepG2 cells with HPD antibody; Blue=isotype control, Green= HPD antibody.

Description

HPD is an enzyme in the catabolic pathway of tyrosine. This protein catalyzes the conversion of 4-hydroxyphenylpyruvate to homogentisate.

Application Notes

The stated application concentrations are suggested starting points. Titration of the HPD antibody may be required due to differences in protocols and secondary/substrate sensitivity.

Immunogen

A portion of amino acids 92-121 from the human protein was used as the immunogen for the HPD antibody.

Storage

Aliquot the HPD antibody and store frozen at -20oC or colder. Avoid repeated freeze-thaw cycles.