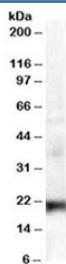


HP1 gamma Antibody / CBX3 (R33699)

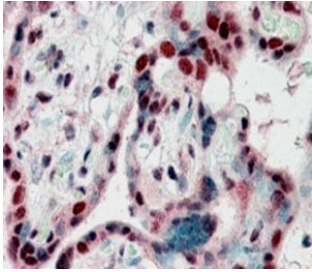
Catalog No.	Formulation	Size
R33699-100UG	0.5 mg/ml in 1X TBS, pH7.3, with 0.5% BSA (US sourced) and 0.02% sodium azide	100 ug

[Bulk quote request](#)

Availability	1-3 business days
Species Reactivity	Human, Mouse
Predicted Reactivity	Dog, Rat
Format	Antigen affinity purified
Host	Goat
Clonality	Polyclonal (goat origin)
Isotype	Goat Ig
Purity	Antigen affinity
Gene ID	11335
Localization	Nuclear
Applications	Western Blot : 0.3-1.0 ug/ml Immunohistochemistry (FFPE) : 2-3ug/ml ELISA (peptide) LOD : 1:32000
Limitations	This HP1 gamma antibody is available for research use only.



Western blot testing of A431 lysate with HP1 gamma antibody at 0.3ug/ml. Predicted molecular weight ~21 kDa.



IHC staining of FFPE human placenta with HP1 gamma antibody at 2.5ug/ml. HIER: steamed with pH6 citrate buffer, AP-staining.

Description

Additional name(s) for this target protein: Heterochromatin protein 1 gamma; CBX3

Application Notes

Optimal dilution of the HP1 gamma antibody should be determined by the researcher.

1. This HP1 gamma antibody does not cross react with HP1-alpha or beta.

Immunogen

Amino acids EAFLNSQKAGKEKD were used as the immunogen for this HP1 Gamma antibody.

Storage

Aliquot and store the HP1 gamma antibody at -20oC.