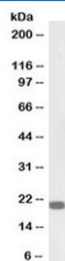


HP1 gamma Antibody / CBX3 (Biotin Conjugate) (R33699BTN)

Catalog No.	Formulation	Size
R33699BTN	0.5 mg/ml in 1X TBS, pH7.3, with 0.5% BSA (US sourced) and 0.02% sodium azide	100 ug

[Bulk quote request](#)

Availability	1-3 business days
Species Reactivity	Human, Mouse
Predicted Reactivity	Dog, Rat
Format	Biotin Conjugate
Clonality	Polyclonal (goat origin)
Isotype	Goat Ig
Purity	Antigen affinity
Gene ID	11335
Localization	Nuclear
Applications	Western Blot : 0.1-0.3 ug/ml ELISA (peptide) LOD : 1:32000
Limitations	This HP1 gamma antibody is available for research use only.



Western blot testing of mouse NIH3T3 lysate with biotinylated HP1 gamma antibody at 0.3ug/ml. Predicted molecular weight ~21 kDa.

Description

Additional name(s) for this target protein: Heterochromatin protein 1 gamma; CBX3

Application Notes

Optimal dilution of the HP1 gamma antibody should be determined by the researcher.

1. This HP1 gamma antibody does not cross react with HP1-alpha or beta.

Immunogen

Amino acids EAFLNSQKAGKEKD were used as the immunogen for this HP1 Gamma antibody.

Storage

Aliquot and store the HP1 gamma antibody at -20oC.