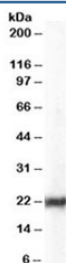


## HP1 Antibody / HP1A (R34848)

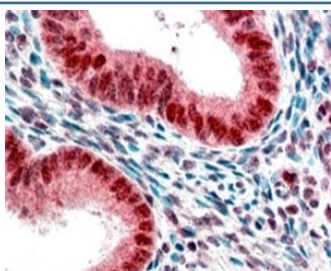
Catalog No.	Formulation	Size
R34848-100UG	0.5 mg/ml in 1X TBS, pH7.3, with 0.5% BSA (US sourced) and 0.02% sodium azide	100 ug

[Bulk quote request](#)

Availability	1-3 business days
Species Reactivity	Human
Predicted Reactivity	Dog, Mouse
Format	Antigen affinity purified
Clonality	Polyclonal (goat origin)
Isotype	Goat Ig
Purity	Antigen affinity
Gene ID	23468
Applications	Western Blot : 0.03-0.1ug/ml Immunohistochemistry (FFPE) : 2-3ug/ml ELISA (peptide) LOD : 1:128000
Limitations	This HP1 antibody is available for research use only.



Western blot testing of HeLa lysate with HP1 antibody at 0.03ug/ml. Predicted molecular weight ~22kDa.



IHC staining of FFPE human uterus with HP1 antibody at 2.5ug/ml. HIER: steamed with pH6 citrate buffer, AP-staining.

## Description

Additional name(s) for this target protein: Heterochromatin protein 1 alpha, HP1 alpha; CBX5

## Application Notes

Optimal dilution of the HP1 antibody should be determined by the researcher.

## Immunogen

Amino acids NKRKSNFSNSADDIK were used as the immunogen for this HP1 antibody.

## Storage

Aliquot and store the HP1 antibody at -20oC.