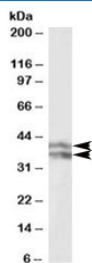


HP Antibody (Haptoglobin beta chain) (R36092)

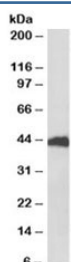
Catalog No.	Formulation	Size
R36092-100UG	0.5 mg/ml in 1X TBS, pH7.3, with 0.5% BSA (US sourced) and 0.02% sodium azide	100 ug

[Bulk quote request](#)

Availability	1-3 business days
Species Reactivity	Human, Pig
Predicted Reactivity	Dog
Format	Antigen affinity purified
Host	Goat
Clonality	Polyclonal (goat origin)
Isotype	Goat Ig
Purity	Antigen affinity
Gene ID	3240
Applications	Western Blot : 0.1-0.3ug/ml ELISA (peptide) LOD : 1:8000
Limitations	This HP antibody is available for research use only.



Western blot testing of human liver lysate with HP antibody at 0.1ug/ml. Predicted molecular weight: ~38-45kDa. Image shows beta chain isoform 1 and 2 being detected.



Western blot of pig liver lysate with HP antibody at 1ug/ml. Predicted molecular weight: ~38-45kDa.

Description

Additional name(s) for this target protein: Haptoglobin

Application Notes

Optimal dilution of the HP antibody should be determined by the researcher.

Immunogen

Amino acids STVPEKKT¹PKSP from the beta chain were used as the immunogen for this HP antibody. This sequence is common to isoforms 1 and 2 of the beta chain.

Storage

Aliquot and store the HP antibody at -20oC.