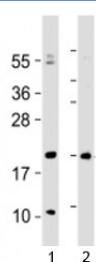


## Hopx Antibody (F53366)

Catalog No.	Formulation	Size
F53366-0.4ML	In 1X PBS, pH 7.4, with 0.09% sodium azide	0.4 ml
F53366-0.08ML	In 1X PBS, pH 7.4, with 0.09% sodium azide	0.08 ml

**Bulk quote request**

<b>Availability</b>	1-3 business days
<b>Species Reactivity</b>	Human, Mouse
<b>Format</b>	Antigen affinity purified
<b>Clonality</b>	Polyclonal (rabbit origin)
<b>Isotype</b>	Rabbit Ig
<b>Purity</b>	Antigen affinity
<b>UniProt</b>	Q8R1H0
<b>Applications</b>	Western Blot : 1:2000
<b>Limitations</b>	This Hopx antibody is available for research use only.



Western blot testing of Hopx antibody at 1:2000 with 1) human heart lysate and 2) mouse heart lysate

## Description

Atypical homeodomain protein which does not bind DNA and is required to modulate cardiac growth and development. Acts via its interaction with SRF, thereby modulating the expression of SRF-dependent cardiac-specific genes and cardiac development. Prevents SRF-dependent transcription either by inhibiting SRF binding to DNA or by recruiting histone deacetylase (HDAC) proteins that prevent transcription by SRF. Overexpression causes cardiac hypertrophy.

## Application Notes

Titration of the Hopx antibody may be required due to differences in protocols and secondary/substrate sensitivity.

## Immunogen

This mouse Hopx antibody was produced from a rabbit immunized with a KLH conjugated synthetic peptide between 22-54 amino acids from the Central region of mouse Hopx.

## Storage

Aliquot the Hopx antibody and store frozen at -20oC or colder. Avoid repeated freeze-thaw cycles.