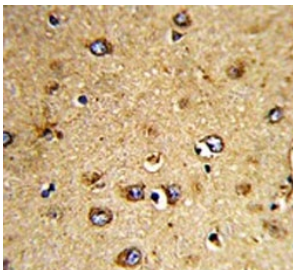


HOMER3 Antibody (F54437)

Catalog No.	Formulation	Size
F54437-0.4ML	In 1X PBS, pH 7.4, with 0.09% sodium azide	0.4 ml
F54437-0.08ML	In 1X PBS, pH 7.4, with 0.09% sodium azide	0.08 ml

[Bulk quote request](#)

Availability	1-3 business days
Species Reactivity	Human, Mouse
Format	Purified
Host	Rabbit
Clonality	Polyclonal (rabbit origin)
Isotype	Rabbit Ig
Purity	Antigen affinity purified
UniProt	Q9NSC5
Localization	Cytoplasmic, cell junction
Applications	Western Blot : 1:500-1:2000 Flow Cytometry : 1:25 (1x10e6 cells) Immunohistochemistry (FFPE) : 1:25
Limitations	This HOMER3 antibody is available for research use only.



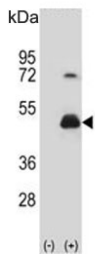
IHC testing of FFPE human brain tissue with HOMER3 antibody. HIER: steam section in pH6 citrate buffer for 20 min and allow to cool prior to staining.



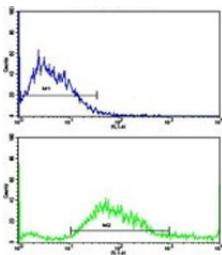
Western blot testing of human MDA-MB-231 cell lysate with HOMER3 antibody. Predicted molecular weight ~40 kDa, can be observed at 45-47 kDa.



Western blot testing of mouse NIH 3T3 cell lysate with HOMER3 antibody. Predicted molecular weight ~40 kDa, can be observed at 45-47 kDa.



Western blot testing of 1) non-transfected and 2) transfected 293 cell lysate with HOMER3 antibody.



Flow cytometry testing of human SK-BR-3 cells with HOMER3 antibody; Blue=isotype control, Green= HOMER3 antibody.

Description

HOMER3 is a member of the HOMER family of postsynaptic density scaffolding proteins that share a similar domain structure consisting of an N-terminal Enabled/vasodilator-stimulated phosphoprotein homology 1 domain which mediates protein-protein interactions, and a carboxy-terminal coiled-coil domain and two leucine zipper motifs that are involved in self-oligomerization. This protein binds numerous other proteins including group I metabotropic glutamate receptors, inositol 1,4,5-trisphosphate receptors and amyloid precursor proteins and has been implicated in diverse biological functions such as neuronal signaling, T-cell activation and trafficking of amyloid beta peptides.

Application Notes

The stated application concentrations are suggested starting points. Titration of the HOMER3 antibody may be required due to differences in protocols and secondary/substrate sensitivity.

Immunogen

A portion of amino acids 281-308 from the human protein was used as the immunogen for the HOMER3 antibody.

Storage

Aliquot the HOMER3 antibody and store frozen at -20oC or colder. Avoid repeated freeze-thaw cycles.