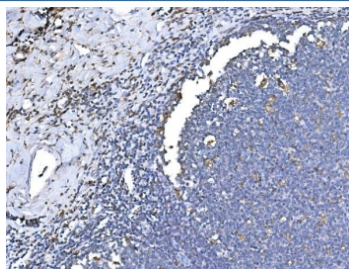


HO-1 Antibody / Heme Oxygenase 1 / HMOX1 (R31625)

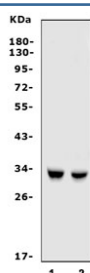
| Catalog No. | Formulation | Size |
|-------------|---|--------|
| R31625 | 0.5mg/ml if reconstituted with 0.2ml sterile DI water | 100 ug |

Bulk quote request

| | |
|---------------------------|---|
| Availability | 1-3 business days |
| Species Reactivity | Human |
| Format | Antigen affinity purified |
| Host | Rabbit |
| Clonality | Polyclonal (rabbit origin) |
| Isotype | Rabbit IgG |
| Purity | Antigen affinity |
| Buffer | Lyophilized from 1X PBS with 2.5% BSA and 0.025% sodium azide |
| Gene ID | 3162 |
| Applications | Western Blot : 0.5-1ug/ml Immunohistochemistry (FFPE) : 2-5ug/ml |
| Limitations | This HO-1 antibody is available for research use only. |



IHC staining of FFPE human tonsil tissue with HO-1 antibody. HIER: boil tissue sections in pH8 EDTA for 20 min and allow to cool before testing.



Western blot testing of human 1) A549 and 2) HeLa cell lysate with HO-1 antibody. Predicted molecular weight: ~32 kDa.

Description

Heme oxygenase (decycling) 1, also known as HO-1, is an essential enzyme in heme catabolism. HO-1 belongs to the heme oxygenase family. The HMOX1 gene is located on the long (q) arm of chromosome 22 at position 12.3, from base pair 34,101,636 to base pair 34,114,748. HO-1, an essential enzyme in heme catabolism, cleaves heme to form biliverdin, which is subsequently converted to bilirubin by biliverdin reductase, and carbon monoxide, a putative neurotransmitter. HO-1 activity is induced by its substrate heme and by various nonheme substances.

Application Notes

The stated application concentrations are suggested starting amounts. Titration of the HO-1 antibody may be required due to differences in protocols and secondary/substrate sensitivity.

Immunogen

Human partial recombinant protein (AA 1-288) was used as the immunogen for this HO-1 antibody.

Storage

After reconstitution, the HO-1 antibody can be stored for up to one month at 4°C. For long-term, aliquot and store at -20°C. Avoid repeated freezing and thawing.