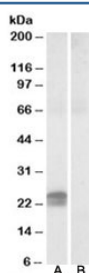


HMGA1 Antibody (R36025)

Catalog No.	Formulation	Size
R36025-100UG	0.5 mg/ml in 1X TBS, pH7.3, with 0.5% BSA (US sourced) and 0.02% sodium azide	100 ug

[Bulk quote request](#)

Availability	1-3 business days
Species Reactivity	Human
Predicted Reactivity	Cow, Dog, Mouse, Pig, Rat
Format	Antigen affinity purified
Clonality	Polyclonal (goat origin)
Isotype	Goat Ig
Purity	Antigen affinity
Gene ID	3159
Applications	Western Blot : 0.5-2ug/ml ELISA (peptide) LOD : 1:16000
Limitations	This HMGA1 antibody is available for research use only.



Western blot testing of human pancreas lysate with HMGA1 antibody at 0.5ug/ml with [B] and without [A] immunizing peptide. Predicted molecular weight: ~12/11/20kDa (isoforms 1a/1b/1c or HMG-I/-Y/-R).

Description

Additional name(s) for this target protein: High mobility group AT-hook 1

Application Notes

Immunogen

Amino acids SQPLASKQEKGDT were used as the immunogen for this HMGA1 antibody. This sequence is common to

isoforms 1a/1b/1c, also called HMG-I/-Y/-R.

Storage

Aliquot and store the HMGA1 antibody at -20oC.