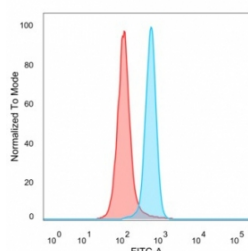


## HMG20B Antibody / BRAF35 / SMARCE1-related protein [clone PCRP-HMG20B-1B5] (V4601)

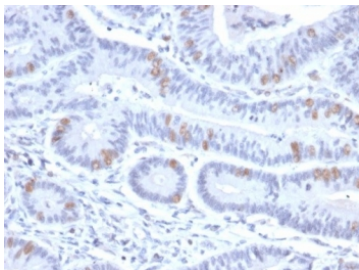
Catalog No.	Formulation	Size
V4601-100UG	0.2 mg/ml in 1X PBS with 0.1 mg/ml BSA (US sourced), 0.05% sodium azide	100 ug
V4601-20UG	0.2 mg/ml in 1X PBS with 0.1 mg/ml BSA (US sourced), 0.05% sodium azide	20 ug
V4601SAF-100UG	1 mg/ml in 1X PBS; BSA free, sodium azide free	100 ug

[Bulk quote request](#)

<b>Availability</b>	1-3 business days
<b>Species Reactivity</b>	Human
<b>Format</b>	Purified
<b>Host</b>	Mouse
<b>Clonality</b>	Monoclonal (mouse origin)
<b>Isotype</b>	Mouse IgG1, kappa
<b>Clone Name</b>	PCRP-HMG20B-1B5
<b>Purity</b>	Protein A/G affinity
<b>UniProt</b>	Q9P0W2
<b>Localization</b>	Nucleus
<b>Applications</b>	ELISA (Order BSA-free Format For Coating) : Flow Cytometry : 1-2ug/million cells Immunohistochemistry (FFPE) : 1-2ug/ml for 30 min at RT
<b>Limitations</b>	This HMG20B antibody is available for research use only.



Flow cytometry testing of PFA-fixed human HeLa cells with HMG20B antibody (clone PCRP-HMG20B-1B5) followed by goat anti-mouse IgG-CF488 (blue); isotype control (red).



IHC staining of FFPE human colon tissue with HMG20B antibody (clone PCRP-HMG20B-1B5). HIER: boil tissue sections in pH 9 10mM Tris with 1mM EDTA for 20 min and allow to cool before testing.



Analysis of a HuProt(TM) microarray containing more than 19,000 full-length human proteins using HMG20B antibody (clone PCRP-HMG20B-1B5). Z- and S- Score: The Z-score represents the strength of a signal that a monoclonal antibody (in combination with a fluorescently-tagged anti-IgG secondary antibody) produces when binding to a particular protein on the HuProt(TM) array. Z-scores are described in units of standard deviations (SD's) above the mean value of all signals generated on that array. If targets on HuProt(TM) are arranged in descending order of the Z-score, the S-score is the difference (also in units of SD's) between the Z-score. S-score therefore represents the relative target specificity of a mAb to its intended target. A mAb is considered to specific to its intended target, if the mAb has an S-score of at least 2.5. For example, if a mAb binds to protein X with a Z-score of 43 and to protein Y with a Z-score of 14, then the S-score for the binding of that mAb to protein X is equal to 29.

## Description

Required for correct progression through G2 phase of the cell cycle and entry into mitosis. Required for RCOR1/CoREST mediated repression of neuronal specific gene promoters. Predicted to enable DNA binding activity. Predicted to be involved in regulation of gene expression. Predicted to act upstream of or within negative regulation of protein sumoylation; positive regulation of neuron differentiation; and skeletal muscle cell differentiation. Located in nuclear body.

## Application Notes

Optimal dilution of the HMG20B antibody should be determined by the researcher.

## Immunogen

A synthetic peptide corresponding to human SMARCE1-related protein was used as the immunogen for the HMG20B antibody.

## Storage

Aliquot the HMG20B antibody and store frozen at -20oC or colder. Avoid repeated freeze-thaw cycles.