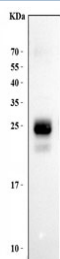


HLA-DPB1 Antibody (R32589)

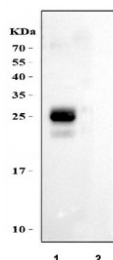
Catalog No.	Formulation	Size
R32589	0.5mg/ml if reconstituted with 0.2ml sterile DI water	100 ug

Bulk quote request

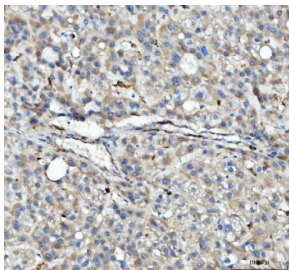
Availability	1-3 business days
Species Reactivity	Human
Format	Antigen affinity purified
Clonality	Polyclonal (rabbit origin)
Isotype	Rabbit IgG
Purity	Antigen affinity
Buffer	Lyophilized from 1X PBS with 2.5% BSA and 0.025% sodium azide
UniProt	P04440
Applications	Western Blot : 0.5-1ug/ml Immunohistochemistry (FFPE) : 2-5ug/ml
Limitations	This HLA-DPB1 antibody is available for research use only.



Western blot testing of human Jurkat lysate with HLA-DPB1 antibody at 0.5ug/ml.
Predicted molecular weight ~29 kDa.



Western blot testing of human 1) Raji and 2) HeLa cell lysate with HLA-DPB1 antibody at 0.5ug/ml. Predicted molecular weight ~29 kDa.



IHC staining of FFPE human liver cancer tissue with HLA-DPB1 antibody. HIER: boil tissue sections in pH8 EDTA for 20 min and allow to cool before testing.

Description

HLA class II histocompatibility antigen, DP (W2) beta chain is a protein that in humans is encoded by the HLA-DPB1 gene. HLA-DPB1 belongs to the HLA class II beta chain paralogues. This class II molecule is a heterodimer consisting of an alpha (DPA) and a beta chain (DPB), both anchored in the membrane. It plays a central role in the immune system by presenting peptides derived from extracellular proteins. Class II molecules are expressed in antigen presenting cells (APC: B lymphocytes, dendritic cells, macrophages). The beta chain is approximately 26-28 kDa and its gene contains 6 exons. Exon one encodes the leader peptide, exons 2 and 3 encode the two extracellular domains, exon 4 encodes the transmembrane domain and exon 5 encodes the cytoplasmic tail. Within the DP molecule both the alpha chain and the beta chain contain the polymorphisms specifying the peptide binding specificities, resulting in up to 4 different molecules.

Application Notes

Optimal dilution of the HLA-DPB1 antibody should be determined by the researcher.

Immunogen

A human HLA-DPB1 recombinant protein corresponding to amino acids R30-A258 was used as the immunogen for the HLA-DPB1 antibody.

Storage

After reconstitution, the HLA-DPB1 antibody can be stored for up to one month at 4°C. For long-term, aliquot and store at -20°C. Avoid repeated freezing and thawing.