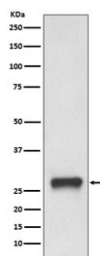


## HLA-DPB1 Antibody [clone AAEB-8] (RQ5054)

Catalog No.	Formulation	Size
RQ5054	Antibody in PBS with 0.02% sodium azide, 50% glycerol and 0.4-0.5mg/ml BSA	100 ul

[Bulk quote request](#)

Availability	1-2 weeks
Species Reactivity	Human
Format	Purified
Host	Rabbit
Clonality	Rabbit Monoclonal
Isotype	Rabbit IgG
Clone Name	AAEB-8
Purity	Affinity purified
UniProt	P04440
Applications	Western Blot : 1:1000-1:5000
Limitations	This HLA-DPB1 antibody is available for research use only.



Western blot testing of human Daudi cell lysate with HLA-DPB1 antibody. Predicted molecular weight ~27 kDa.

## Description

HLA-DPB belongs to the HLA class II beta chain paralogues. This class II molecule is a heterodimer consisting of an alpha (DPA) and a beta chain (DPB), both anchored in the membrane. It plays a central role in the immune system by presenting peptides derived from extracellular proteins. Class II molecules are expressed in antigen presenting cells (APC: B lymphocytes, dendritic cells, macrophages). The beta chain is approximately 26-28 kDa and its gene contains 6 exons. Exon one encodes the leader peptide, exons 2 and 3 encode the two extracellular domains, exon 4 encodes the transmembrane domain and exon 5 encodes the cytoplasmic tail. [RefSeq]

## Application Notes

Optimal dilution of the HLA-DPB1 antibody should be determined by the researcher.

## Immunogen

A synthetic peptide specific to human HLA-DPB1 was used as the immunogen for the HLA-DPB1 antibody.

## Storage

Store the HLA-DPB1 antibody at -20oC.