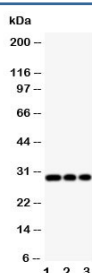


HLA-DM Antibody (beta chain) (R30885)

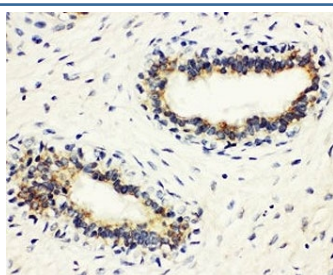
Catalog No.	Formulation	Size
R30885	0.5mg/ml if reconstituted with 0.2ml sterile DI water	100 ug

Bulk quote request

Availability	1-3 business days
Species Reactivity	Human
Format	Antigen affinity purified
Host	Rabbit
Clonality	Polyclonal (rabbit origin)
Isotype	Rabbit IgG
Purity	Antigen affinity
Buffer	Lyophilized from 1X PBS with 2.5% BSA and 0.025% sodium azide/thimerosal
UniProt	P28068
Applications	Western Blot : 0.5-1ug/ml IHC (FFPE) : 0.5-1ug/ml
Limitations	This HLA-DM antibody is available for research use only.



Western blot testing of HLA-DM antibody and Lane 1: Jurkat; 2: Raji; 3: HUT cell lysate



IHC-P: HLA-DM antibody testing of human breast cancer tissue

Description

Major histocompatibility complex, class II, DM beta, also known as D6S221E, RING7, HLA-DM histocompatibility type, beta chain, HLADMB or RING7, is a protein that in humans is encoded by the HLADMB gene. HLA-DMB belongs to the HLA class II beta chain paralogues. This class II molecule is a heterodimer consisting of an alpha (DMA) and a beta (DMB) chains, both anchored in the membrane. It is located in intracellular vesicles. The protein plays a central role in the peptide loading of MHC class II molecules by helping to release the CLIP (class II-associated invariant chain peptide) molecule from the peptide binding site. Class II molecules are expressed in antigen presenting cells. The beta chain is approximately 26-28 kDa and its gene contains 6 exons. HLA-DMA and -DMB appear to encode subunits of a functional heterodimer that is critical in the pathway of class II antigen presentation.

Application Notes

The stated application concentrations are suggested starting amounts. Titration of the HLA-DM antibody may be required due to differences in protocols and secondary/substrate sensitivity.

Immunogen

An amino acid sequence from the middle region of human HLA-DM beta chain (NQKDTLMQRLRNGLQNCATH) was used as the immunogen for this HLA-DM antibody.

Storage

After reconstitution, the HLA-DM antibody can be stored for up to one month at 4oC. For long-term, aliquot and store at -20oC. Avoid repeated freezing and thawing.