

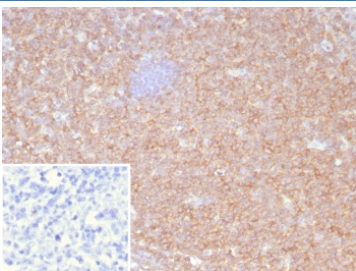
HLA-B Antibody [clone JOAN-1] (V2575)

Catalog No.	Formulation	Size
V2575-100UG	0.2 mg/ml in 1X PBS with 0.1 mg/ml BSA (US sourced) and 0.05% sodium azide	100 ug
V2575-20UG	0.2 mg/ml in 1X PBS with 0.1 mg/ml BSA (US sourced) and 0.05% sodium azide	20 ug
V2575SAF-100UG	1 mg/ml in 1X PBS; BSA free, sodium azide free	100 ug

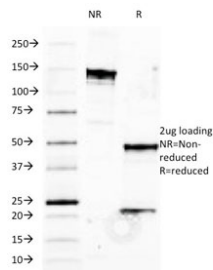
 Citations (9)

[Bulk quote request](#)

Availability	1-3 business days
Species Reactivity	Human
Format	Purified
Host	Mouse
Clonality	Monoclonal (mouse origin)
Isotype	Mouse IgG3, kappa
Clone Name	JOAN-1
Purity	Protein G affinity chromatography
UniProt	P03989
Localization	Cell surface
Applications	Flow Cytometry : 1-2ug/10 ⁶ cells Immunofluorescence : 1-2ug/ml Immunohistochemistry (FFPE) : 1-2ug/ml
Limitations	This HLA-B antibody is available for research use only.



IHC staining of FFPE human tonsil tissue with HLA-B antibody (clone JOAN-1). HIER: boil tissue sections in pH 9 10mM Tris with 1mM EDTA for 20 min and allow to cool before testing.



SDS-PAGE analysis of purified, BSA-free HLA-B antibody (clone JOAN-1) as confirmation of integrity and purity.

Description

HLA-B belongs to the HLA class I heavy chain paralogues. This class I molecule is a heterodimer consisting of a heavy chain and a light chain (beta-2 microglobulin). The heavy chain is anchored in the membrane. Class I molecules play a central role in the immune system by presenting peptides derived from the endoplasmic reticulum lumen. They are expressed in nearly all cells. The heavy chain is approximately 45kDa and its gene contains 8 exons. Exon 1 encodes the leader peptide, exon 2 and 3 encode the alpha1 and alpha2 domains, which both bind the peptide, exon 4 encodes the alpha3 domain, exon 5 encodes the transmembrane region and exons 6 and 7 encode the cytoplasmic tail. Polymorphisms within exon 2 and exon 3 are responsible for the peptide binding specificity of each class one molecule. Typing for these polymorphisms is routinely done for bone marrow and kidney transplantation. Hundreds of HLA-B alleles have been described.

Application Notes

Optimal dilution of the HLA-B antibody should be determined by the researcher.

Immunogen

Normal human peripheral blood lymphocytes were used as the immunogen for the HLA-B antibody.

Storage

Store the HLA-B antibody at 2-8oC (with azide) or aliquot and store at -20oC or colder (without azide).