

## HLA-B Antibody (F55089)

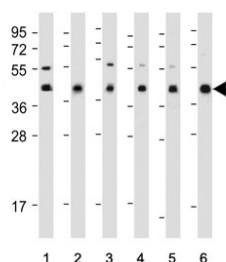
Catalog No.	Formulation	Size
F55089-0.4ML	In 1X PBS, pH 7.4, with 0.09% sodium azide	0.4 ml
F55089-0.08ML	In 1X PBS, pH 7.4, with 0.09% sodium azide	0.08 ml

[Bulk quote request](#)

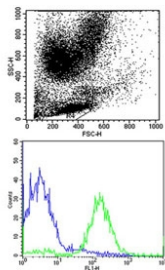
<b>Availability</b>	1-3 business days
<b>Species Reactivity</b>	Human
<b>Format</b>	Purified
<b>Clonality</b>	Polyclonal (rabbit origin)
<b>Isotype</b>	Rabbit Ig
<b>Purity</b>	Antigen affinity purified
<b>UniProt</b>	P03989
<b>Applications</b>	Western Blot : 1:1000-1:2000 Immunohistochemistry (FFPE) : 1:50-1:100 Flow Cytometry : 1:25 per million cells in 0.1ML
<b>Limitations</b>	This HLA-B antibody is available for research use only.



IHC testing of FFPE human tonsil tissue with HLA-B antibody. HIER: steam section in pH6 citrate buffer for 20 min and allow to cool prior to staining.



Western blot testing of human 1) HL60, 2) CCRF-CEM, 3) Jurkat, 4) Ramos, 5) A375 and 6) A2058 cell lysate with HLA-B antibody. Predicted molecular weight 40-45 kDa depending on level of glycosylation.



Flow cytometry testing of human PBM cells with HLA-B antibody; Blue=isotype control, Green= HLA-B antibody.

## Description

One of the key roles of the HLA-B protein (HLA class I histocompatibility antigen, B alpha chain) is to present fragments of proteins from foreign invaders to our immune cells, specifically T cells. This process, known as antigen presentation, allows our immune system to recognize and target these invaders for destruction. Without a properly functioning HLA-B protein, our immune system would struggle to effectively identify and combat threats. In addition to its role in immune response, HLA-B has also been linked to a variety of health conditions. Certain variations of the HLA-B gene have been associated with an increased risk of autoimmune diseases, such as rheumatoid arthritis and psoriasis. Understanding these genetic factors can help researchers develop personalized treatments that target the underlying causes of these conditions.

## Application Notes

The stated application concentrations are suggested starting points. Titration of the HLA-B antibody may be required due to differences in protocols and secondary/substrate sensitivity.

## Immunogen

A portion of amino acids 62-90 from the human protein was used as the immunogen for the HLA-B antibody.

## Storage

Aliquot the HLA-B antibody and store frozen at -20oC or colder. Avoid repeated freeze-thaw cycles.