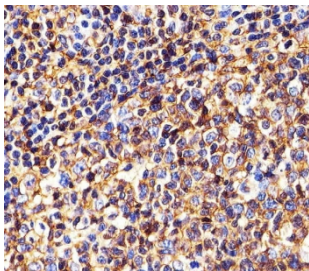


## HLA-B Antibody (F54291)

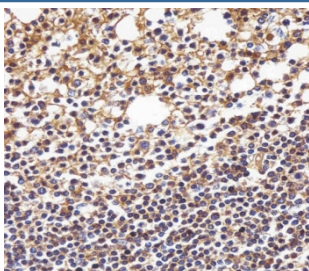
Catalog No.	Formulation	Size
F54291-0.4ML	In 1X PBS, pH 7.4, with 0.09% sodium azide	0.4 ml
F54291-0.08ML	In 1X PBS, pH 7.4, with 0.09% sodium azide	0.08 ml

[Bulk quote request](#)

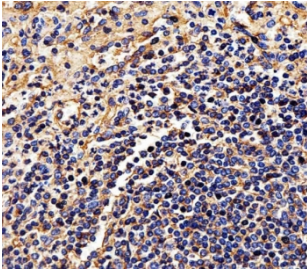
<b>Availability</b>	1-3 business days
<b>Species Reactivity</b>	Human
<b>Format</b>	Purified
<b>Host</b>	Rabbit
<b>Clonality</b>	Polyclonal (rabbit origin)
<b>Isotype</b>	Rabbit Ig
<b>Purity</b>	Antigen affinity purified
<b>UniProt</b>	P30464
<b>Applications</b>	Western Blot : 1:500-1:2000 Immunohistochemistry (FFPE) : 1:25
<b>Limitations</b>	This HLA-B antibody is available for research use only.



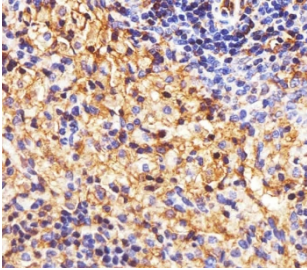
IHC testing of FFPE human tonsil tissue with HLA-B antibody. HIER: steam section in pH6 citrate buffer for 20 min and allow to cool prior to staining.



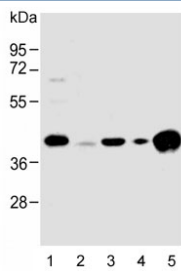
IHC testing of FFPE human tonsil tissue with HLA-B antibody. HIER: steam section in pH6 citrate buffer for 20 min and allow to cool prior to staining.



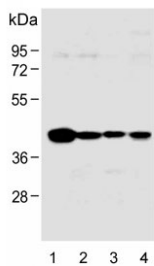
IHC testing of FFPE human spleen tissue with HLA-B antibody. HIER: steam section in pH6 citrate buffer for 20 min and allow to cool prior to staining.



IHC testing of FFPE rat spleen tissue with HLA-B antibody. HIER: steam section in pH6 citrate buffer for 20 min and allow to cool prior to staining.



Western blot testing of human 1) HeLa, 2) HL60, 3) Jurkat, 4) Ramos and 5) spleen lysate with HLA-B antibody. Predicted molecular weight: ~40/45 kDa (unmodified/glycosylated).



Western blot testing of human 1) HeLa, 2) HL60, 3) A549 and 4) Jurkat lysate with HLA-B antibody. Predicted molecular weight: ~40/45 kDa (unmodified/glycosylated).

## Description

Involved in the presentation of foreign antigens to the immune system.

## Application Notes

The stated application concentrations are suggested starting points. Titration of the HLA-B antibody may be required due to differences in protocols and secondary/substrate sensitivity.

## Immunogen

A portion of amino acids from the human protein were used as the immunogen for the HLA-B antibody.

## Storage

Aliquot the HLA-B antibody and store frozen at -20°C or colder. Avoid repeated freeze-thaw cycles.

