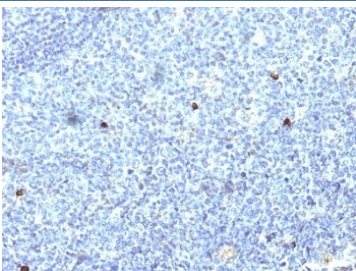


## HLA-A25 Antibody (HLA-Aw32) [clone SPM418] (V2573)

Catalog No.	Formulation	Size
V2573-100UG	0.2 mg/ml in 1X PBS with 0.1 mg/ml BSA (US sourced) and 0.05% sodium azide	100 ug
V2573-20UG	0.2 mg/ml in 1X PBS with 0.1 mg/ml BSA (US sourced) and 0.05% sodium azide	20 ug
V2573SAF-100UG	1 mg/ml in 1X PBS; BSA free, sodium azide free	100 ug
V2573IHC-7ML	Prediluted in 1X PBS with 0.1 mg/ml BSA (US sourced) and 0.05% sodium azide; *For IHC use only*	7 ml

### Bulk quote request

<b>Availability</b>	1-3 business days
<b>Species Reactivity</b>	Human
<b>Format</b>	Purified
<b>Host</b>	Mouse
<b>Clonality</b>	Monoclonal (mouse origin)
<b>Isotype</b>	Mouse IgG2a, kappa
<b>Clone Name</b>	SPM418
<b>Purity</b>	Protein G affinity chromatography
<b>UniProt</b>	P30443
<b>Localization</b>	Cell surface
<b>Applications</b>	Immunohistochemistry (FFPE) : 1-2ug/ml for 30 min at RT
<b>Limitations</b>	This HLA-A25 antibody (HLA-Aw32) is available for research use only.



IHC: Formalin-fixed, paraffin-embedded human tonsil stained with HLA-Aw32 / HLA-A25 antibody (SPM418).

## Description

This mAb reacts with cells bearing HLA-A25 or HLA-Aw32 antigens. In addition, a reaction was observed with a cell of phenotype A2, Aw31; B17, Bw49. HLA-A, with HLA-B and HLA-C, belongs to major histocompatibility complex (MHC) class I antigens and expresses constitutively on all nucleated cells. HLA system comprises closely linked genes controlling highly polymorphic proteins involved in the presentation of peptides to the T-cell receptor, inhibition of NK cell cytotoxicity, and rejection of tissue allotransplantation. Specific alleles at HLA loci are associated with diseases. This mAb is specifically applicable for typing peripheral T cells for the antigens HLA-A25 and HLA-Aw32.

## Application Notes

Optimal dilution of the HLA-A25 antibody (HLA-Aw32) should be determined by the researcher.

1. Staining of formalin/paraffin tissues requires boiling tissue sections in pH 9 10mM Tris with 1mM EDTA for 10-20 min followed by cooling at RT for 20 min.
2. The prediluted format is supplied in a dropper bottle and is optimized for use in IHC. After epitope retrieval step (if required), drip mAb solution onto the tissue section and incubate at RT for 30 min.

## Immunogen

Normal human peripheral blood lymphocytes of phenotype A1, Aw32, B7, B37, Cw-, Cw-, DR2, and DRw10 were used as the immunogen for the HLA-A25 antibody (HLA-Aw32).

## Storage

Store the HLA-A25 antibody (HLA-Aw32) at 2-8oC (with azide) or aliquot and store at -20oC or colder (without azide).