

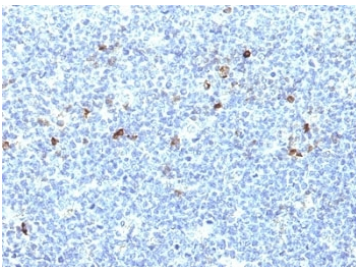
HLA-A25 Antibody (HLA-Aw32) [clone CATA-1] (V2572)

Catalog No.	Formulation	Size
V2572-100UG	0.2 mg/ml in 1X PBS with 0.1 mg/ml BSA (US sourced) and 0.05% sodium azide	100 ug
V2572-20UG	0.2 mg/ml in 1X PBS with 0.1 mg/ml BSA (US sourced) and 0.05% sodium azide	20 ug
V2572SAF-100UG	1 mg/ml in 1X PBS; BSA free, sodium azide free	100 ug
V2572IHC-7ML	Prediluted in 1X PBS with 0.1 mg/ml BSA (US sourced) and 0.05% sodium azide; *For IHC use only*	7 ml

 Citations (7)

[Bulk quote request](#)

Availability	1-3 business days
Species Reactivity	Human
Format	Purified
Host	Mouse
Clonality	Monoclonal (mouse origin)
Isotype	Mouse IgG2a, kappa
Clone Name	CATA-1
Purity	Protein G affinity chromatography
UniProt	P30443
Localization	Cell surface
Applications	Flow Cytometry : 1-2ug/million cells Immunofluorescence : 1-2ug/ml Immunohistochemistry (FFPE) : 1-2ug/ml for 30 min at RT
Limitations	This HLA-A25 antibody (HLA-Aw32) is available for research use only.



IHC: Formalin-fixed, paraffin-embedded human tonsil stained with HLA-Aw32 / HLA-A25 antibody (CATA-1).

Description

This mAb reacts with cells bearing HLA-A25 or HLA-Aw32 antigens. In addition, a reaction was observed with a cell of phenotype A2, Aw31; B17, Bw49. HLA-A, with HLA-B and HLA-C, belongs to major histocompatibility complex (MHC) class I antigens and expresses constitutively on all nucleated cells. HLA system comprises closely linked genes controlling highly polymorphic proteins involved in the presentation of peptides to the T-cell receptor, inhibition of NK cell cytotoxicity, and rejection of tissue allotransplantation. Specific alleles at HLA loci are associated with diseases. This mAb is specifically applicable for typing peripheral T cells for the antigens HLA-A25 and HLA-Aw32.

Application Notes

Optimal dilution of the HLA-A25 antibody (HLA-Aw32) should be determined by the researcher.

1. Staining of formalin/paraffin tissues requires boiling tissue sections in 10mM Citrate buffer, pH 6.0, for 10-20 min followed by cooling at RT for 20 min.
2. The prediluted format is supplied in a dropper bottle and is optimized for use in IHC. After epitope retrieval step (if required), drip mAb solution onto the tissue section and incubate at RT for 30 min.

Immunogen

Normal human peripheral blood lymphocytes of phenotype A1, Aw32, B7, B37, Cw-, Cw-, DR2, and DRw10 were used as the immunogen for the HLA-A25 antibody (HLA-Aw32).

Storage

Store the HLA-A25 antibody (HLA-Aw32) at 2-8oC (with azide) or aliquot and store at -20oC or colder (without azide).