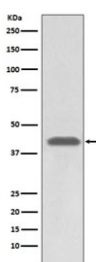


HLA-A Antibody [clone BBI-8] (RQ4986)

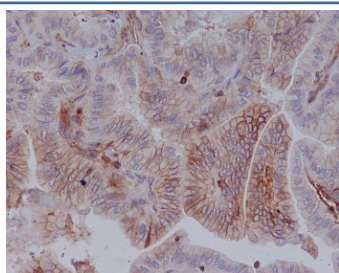
Catalog No.	Formulation	Size
RQ4986	Antibody in PBS with 0.02% sodium azide, 50% glycerol and 0.4-0.5mg/ml BSA	100 ul

[Bulk quote request](#)

Availability	1-2 weeks
Species Reactivity	Human
Format	Purified
Clonality	Rabbit Monoclonal
Isotype	Rabbit IgG
Clone Name	BBI-8
Purity	Affinity purified
UniProt	P01891
Applications	Western Blot : 1:500-1:2000 Immunohistochemistry (FFPE) : 1:50-1:200
Limitations	This HLA-A antibody is available for research use only.



Western blot testing of human A549 cell lysate with HLA-A antibody. Predicted molecular weight ~41 kDa.



IHC staining of FFPE human thyroid cancer with HLA-A antibody. HIIE: boil tissue sections in pH6, 10mM citrate buffer, for 10-20 min and allow to cool before testing.

Description

HLA-A is involved in the presentation of foreign antigens to the immune system. [UniProt]

Application Notes

Optimal dilution of the HLA-A antibody should be determined by the researcher.

Immunogen

A synthetic peptide specific to human HLA-A was used as the immunogen for the HLA-A antibody.

Storage

Store the HLA-A antibody at -20oC.