

## Histone H3.3 Antibody (H3F3A) (F52005)

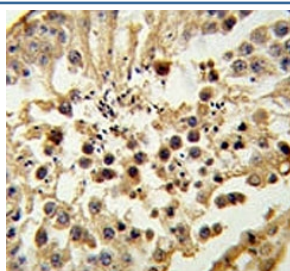
Catalog No.	Formulation	Size
F52005-0.4ML	In 1X PBS, pH 7.4, with 0.09% sodium azide	0.4 ml
F52005-0.08ML	In 1X PBS, pH 7.4, with 0.09% sodium azide	0.08 ml

[Bulk quote request](#)

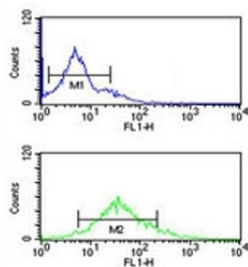
<b>Availability</b>	1-3 business days
<b>Species Reactivity</b>	Human
<b>Format</b>	Antigen affinity purified
<b>Host</b>	Rabbit
<b>Clonality</b>	Polyclonal (rabbit origin)
<b>Isotype</b>	Rabbit Ig
<b>Purity</b>	Antigen affinity
<b>UniProt</b>	P84243
<b>Applications</b>	Western Blot : 1:1000 IHC (Paraffin) : 1:50-1:100 Flow Cytometry : 1:10-1:50
<b>Limitations</b>	This Histone H3.3 antibody is available for research use only.

55  
36  
28  
17  
11

Western blot analysis of Histone H3.3 in K562 lysate



Histone H3.3 antibody IHC analysis in formalin fixed and paraffin embedded testis tissue.



Histone H3.3 antibody flow cytometric analysis of K562 cells (bottom histogram) compared to a negative control cell (top histogram). FITC-conjugated goat-anti-rabbit secondary Ab was used for the analysis.

## Description

Histones are basic nuclear proteins that are responsible for the nucleosome structure of the chromosomal fiber in eukaryotes. This structure consists of approximately 146 bp of DNA wrapped around a nucleosome, an octamer composed of pairs of each of the four core histones (H2A, H2B, H3, and H4). The chromatin fiber is further compacted through the interaction of a linker histone, H1, with the DNA between the nucleosomes to form higher order chromatin structures. This gene for histone H3-MeK9 is intronless and encodes a member of the histone H3 family. Transcripts from this gene lack polyA tails; instead, they contain a palindromic termination element. This gene is found in the large histone gene cluster on chromosome 6p22-p21.3.

## Application Notes

Titration of the Histone H3.3 antibody may be required due to differences in protocols and secondary/substrate sensitivity.

## Immunogen

This Histone H3.3 antibody was produced from rabbits immunized with a KLH conjugated synthetic peptide selected from the K9 region of human H3F3A.

## Storage

Aliquot the Histone H3.3 antibody and store frozen at -20oC or colder. Avoid repeated freeze-thaw cycles.