

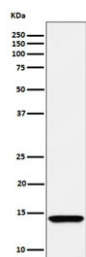
HINT1 Antibody [clone 28H79] (RQ8515)

Catalog No.	Formulation	Size
RQ8515	Antibody in PBS with 0.02% sodium azide, 50% glycerol and 0.4-0.5mg/ml BSA	100 ul

Recombinant RABBIT MONOCLONAL

[Bulk quote request](#)

Availability	1-3 days
Species Reactivity	Human
Format	Purified
Clonality	Recombinant Rabbit Monoclonal
Isotype	Rabbit IgG
Clone Name	28H79
Purity	Affinity chromatography
UniProt	P49773
Applications	Western Blot : 1:500-1:2000
Limitations	This HINT1 antibody is available for research use only.



Western blot testing of human HEK293 cell lysate with HINT1 antibody. Expected molecular weight ~14 kDa.

Description

Exhibits adenosine 5'-monophosphoramidase activity, hydrolyzing purine nucleotide phosphoramidates with a single phosphate group such as adenosine 5'monophosphoramidate (AMP-NH₂) to yield AMP and NH₂. In addition, functions as scaffolding protein that modulates transcriptional activation by the LEF1/TCF1-CTNNB1 complex and by the complex formed with MITF and CTNNB1. [UniProt]

Application Notes

Optimal dilution of the HINT1 antibody should be determined by the researcher.

Immunogen

A synthetic peptide from human Adenosine 5'-monophosphoramidase HINT1 protein was used as the immunogen for the HINT1 antibody.

Storage

Store the HINT1 antibody at -20oC.