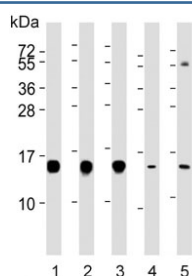


HINT1 Antibody [clone 1500CT836.13.93] (F54529)

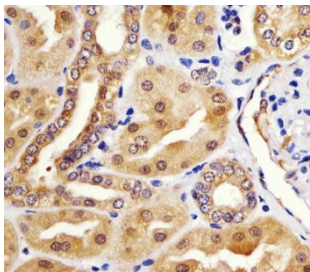
Catalog No.	Formulation	Size
F54529-0.4ML	In 1X PBS, pH 7.4, with 0.09% sodium azide	0.4 ml
F54529-0.08ML	In 1X PBS, pH 7.4, with 0.09% sodium azide	0.08 ml

[Bulk quote request](#)

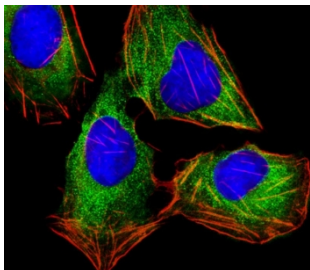
Availability	1-3 business days
Species Reactivity	Human, Mouse, Rat
Format	Purified
Host	Mouse
Clonality	Monoclonal (mouse origin)
Isotype	IgG1, kappa
Clone Name	1500CT836.13.93
Purity	Protein G affinity
UniProt	P49773
Localization	Cytoplasmic, nuclear
Applications	Western Blot : 1:500-1:2000 Flow Cytometry : 1:25 (1x10 ⁶ cells) Immunohistochemistry (FFPE) : 1:25 Immunofluorescence : 1:25
Limitations	This HINT1 antibody is available for research use only.



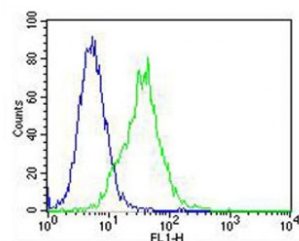
Western blot testing of human 1) Jurkat, 2) Raji, 3) HepG2, 4) rat brain and 5) mouse liver lysate with HINT1 antibody. Expected molecular weight ~14 kDa.



IHC testing of FFPE human kidney tissue with HINT1 antibody. HIER: steam section in pH6 citrate buffer for 20 min and allow to cool prior to staining.



Immunofluorescent staining of fixed and permeabilized human U-2 OS cells with HINT1 antibody (green), DAPI nuclear stain (blue) and anti-Actin (red).



Flow cytometry testing of fixed and permeabilized human Jurkat cells with HINT1 antibody; Blue=isotype control, Green= HINT1 antibody.

Description

Hydrolyzes purine nucleotide phosphoramidates with a single phosphate group, including adenosine 5'monophosphoramidate (AMP-NH₂), adenosine 5'monophosphomorpholidate (AMP-morpholidate) and guanosine 5'monophosphomorpholidate (GMP-morpholidate). Hydrolyzes lysyl-AMP (AMP-N-epsilon-(N-alpha-acetyl lysine methyl ester)) generated by lysine tRNA ligase, as well as Met-AMP, His- AMP and Asp-AMP, lysyl-GMP (GMP-N-epsilon-(N-alpha-acetyl lysine methyl ester)) and AMP-N-alanine methyl ester. Can also convert adenosine 5'-O-phosphorothioate and guanosine 5'-O- phosphorothioate to the corresponding nucleoside 5'-O-phosphates with concomitant release of hydrogen sulfide. In addition, functions as scaffolding protein that modulates transcriptional activation by the LEF1/TCF1-CTNNB1 complex and by the complex formed with MITF and CTNNB1. Modulates p53/TP53 levels and p53/TP53-mediated apoptosis. Modulates proteasomal degradation of target proteins by the SCF (SKP2-CUL1-F-box protein) E3 ubiquitin- protein ligase complex.

Application Notes

The stated application concentrations are suggested starting points. Titration of the HINT1 antibody may be required due to differences in protocols and secondary/substrate sensitivity.

Immunogen

Recombinant human protein was used as the immunogen for the HINT1 antibody.

Storage

Aliquot the HINT1 antibody and store frozen at -20oC or colder. Avoid repeated freeze-thaw cycles.

