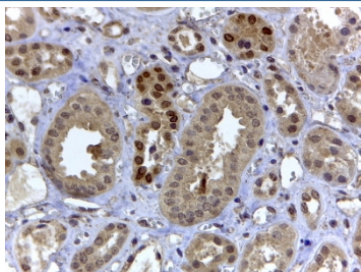


HIF3A Antibody (R35216)

| Catalog No. | Formulation | Size |
|--------------|-------------------------------------------------------------------------------|--------|
| R35216-100UG | 0.5 mg/ml in 1X TBS, pH7.3, with 0.5% BSA (US sourced) and 0.02% sodium azide | 100 ug |

[Bulk quote request](#)

| | |
|----------------------|--------------------------------------------------------------------------|
| Availability | 1-3 business days |
| Species Reactivity | Human |
| Predicted Reactivity | Mouse, Rat |
| Format | Antigen affinity purified |
| Host | Goat |
| Clonality | Polyclonal (goat origin) |
| Isotype | Goat Ig |
| Purity | Antigen affinity |
| Gene ID | 64344 |
| Applications | Immunohistochemistry (FFPE) : 4-6ug/ml ELISA (peptide) LOD : 1:128000 |
| Limitations | This HIF3A antibody is available for research use only. |



IHC testing of FFPE human kidney with HIF3A antibody at 4ug/ml. HIER: steamed with pH6 citrate buffer, HRP-staining. Nuclear staining in some of the distal convoluted tubules is seen.

Description

Additional name(s) for this target protein: Hypoxia inducible factor 3 alpha

Application Notes

Optimal dilution of the HIF3A antibody should be determined by the researcher.

1. This HIF3A antibody is specific for isoforms a and c.

Immunogen

Amino acids QDHRSTTELKKEKS were used as the immunogen for this HIF3A antibody.

Storage

Aliquot and store the HIF3A antibody at -20oC.