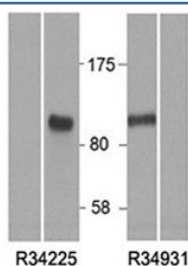


HIC1 Antibody (R34225)

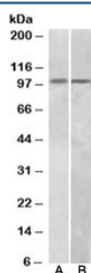
Catalog No.	Formulation	Size
R34225-100UG	0.5 mg/ml in 1X TBS, pH7.3, with 0.5% BSA (US sourced) and 0.02% sodium azide	100 ug

[Bulk quote request](#)

Availability	1-3 business days
Species Reactivity	Human
Predicted Reactivity	Cow, Dog, Mouse, Pig, Rat
Format	Antigen affinity purified
Clonality	Polyclonal (goat origin)
Isotype	Goat Ig
Purity	Antigen affinity
Gene ID	3090
Applications	Western Blot : 0.5-1.5ug/ml ELISA (peptide) LOD : 1:128000
Limitations	This HIC1 antibody is available for research use only.



Western blot of HEK293 lysate overexpressing human HIC1 tested with HIC1 antibody at (0.5ug/ml). Mock transfection lanes also shown. Predicted molecular weight: ~77kDa but can be observed at ~100kDa.



Western blot testing of A549 (A) and Jurkat (B) lysates with HIC1 antibody at 1ug/ml. Predicted molecular weight: ~77kDa but can be observed at ~100kDa.

Description

Additional name(s) for this target protein: Hypermethylated in cancer 1

Application Notes

Optimal dilution of the HIC1 antibody should be determined by the researcher.

Immunogen

Amino acids HLEGYPCHLAYGEP were used as the immunogen for this HIC1 antibody.

Storage

Aliquot and store the HIC1 antibody at -20oC.