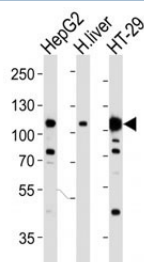


HGFR Antibody (MET) [clone 4AT247] (F40183)

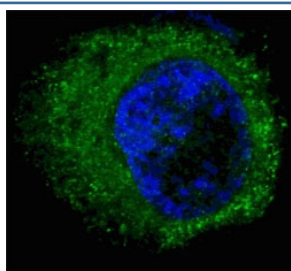
Catalog No.	Formulation	Size
F40183-0.4ML	In 1X PBS, pH 7.4, with 0.09% sodium azide	0.4 ml
F40183-0.08ML	In 1X PBS, pH 7.4, with 0.09% sodium azide	0.08 ml

[Bulk quote request](#)

Availability	1-3 business days
Species Reactivity	Human, Mouse
Format	Purified
Clonality	Monoclonal (mouse origin)
Isotype	Mouse IgG1
Clone Name	4AT247
Purity	Purified
UniProt	P08581
Applications	Western Blot : 1:1000 Immunofluorescence : 1:100
Limitations	This HGFR antibody (MET) is available for research use only.



Western blot analysis of lysate from HepG2, human liver, HT-29 cell line (left to right) using HGFR antibody. Predicted molecular weight ~156 kDa.



Fluorescent confocal image of HepG2 cells stained with HGFR antibody. Note the highly specific localization of the MET/HGFR immunosignal to the cytoplasm.

Description

The proto-oncogene MET product is the hepatocyte growth factor receptor and encodes tyrosine-kinase activity. The primary single chain precursor protein is post-translationally cleaved to produce the alpha and beta subunits, which are disulfide linked to form the mature receptor. Various mutations in the MET gene are associated with papillary renal carcinoma. Two transcript variants encoding different isoforms have been found for this gene.

Application Notes

Titration of the HGFR antibody (MET) may be required due to differences in protocols and secondary/substrate sensitivity.

Immunogen

This HGFR antibody was produced from mice immunized with purified recombinant protein encoding the catalytic domain of human MET/HGFR.

Storage

Aliquot the HGFR antibody (MET) and store frozen at -20oC or colder. Avoid repeated freeze-thaw cycles.